

## Anti-Phospho-RPS6KB1-Ser418 antibody (384-433 aa) (STJ91046)

### GENERAL INFORMATION

Product Type	Primary antibodies
Applications	WB/IHC/IF/ELISA
Host / Source	Rabbit
Reactivity	Human/Mouse/Rat

### PRODUCT PROPERTIES

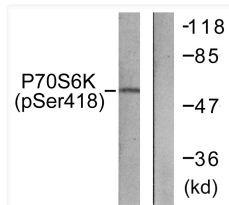
Clonality	Polyclonal
Concentration	1 mg/mL
Conjugation	Unconjugated
Purification	The antibody was affinity-purified from rabbit antiserum by affinity-chromatography using epitope-specific immunogen.
Dilution Range	WB 1:500-1:2000 IHC 1:100-1:300 IF 1:200-1:1000 ELISA 1:20000
Formulation	Liquid in PBS containing 50% Glycerol, 0.5% BSA and 0.02% Sodium Azide.
Isotype	IgG
Molecular Weight	Observed: 60kD
Storage Instruction	Store at -20°C for up to 1 year from the date of receipt, and avoid repeat freeze-thaw cycles.

### TARGET INFORMATION

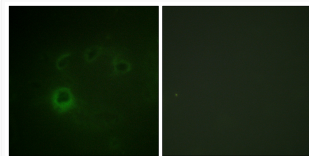
Gene ID	<a href="#">6198</a>
Gene Symbol	<a href="#">RPS6KB1</a>
UniProt ID	<a href="#">KS6B1_HUMAN</a>
Immunogen Region	384-433 aa
Specificity	Phospho-p70 S6 kinase Alpha (S418) Polyclonal Antibody detects endogenous levels of p70 S6 kinase Alpha protein only when phosphorylated at S418.

### ADDITIONAL INFORMATION

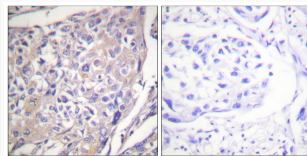
Note **STRICTLY FOR FURTHER SCIENTIFIC RESEARCH USE ONLY (RUO). MUST NOT TO BE USED IN DIAGNOSTIC OR THERAPEUTIC APPLICATIONS.**



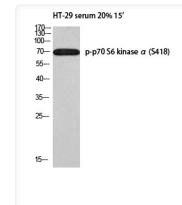
Western blot analysis of lysates from HT29 cells treated with serum 20% 15', using p70 S6 Kinase (Phospho-Ser418) Antibody. The lane on the right is blocked with the phospho peptide.



Immunofluorescence analysis of COS7 cells, using p70 S6 Kinase (Phospho-Ser418) Antibody. The picture on the right is blocked with the phospho peptide.



Immunohistochemistry analysis of paraffin-embedded human breast carcinoma, using p70 S6 Kinase (Phospho-Ser418) Antibody. The picture on the right is blocked with the phospho peptide.



Western blot analysis of HT-29 serum 20% 15' using p-p70 S6 kinase Alpha (S418) antibody. Antibody was diluted at 1:1000