

## Anti-Phospho-IRS1-Ser323 antibody (289-338 aa) (STJ91041)

### GENERAL INFORMATION

Product Type	Primary antibodies
Applications	WB/IHC/IF/ELISA
Host / Source	Rabbit
Reactivity	Human/Mouse/Rat/Monkey

### PRODUCT PROPERTIES

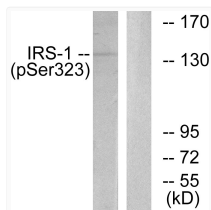
Clonality	Polyclonal
Concentration	1 mg/mL
Conjugation	Unconjugated
Purification	The antibody was affinity-purified from rabbit antiserum by affinity-chromatography using epitope-specific immunogen.
Dilution Range	WB 1:500-1:2000 IHC 1:100-1:300 IF 1:200-1:1000 ELISA 1:10000
Formulation	Liquid in PBS containing 50% Glycerol, 0.5% BSA and 0.02% Sodium Azide.
Isotype	IgG
Molecular Weight	Observed: 170kD
Storage Instruction	Store at -20°C for up to 1 year from the date of receipt, and avoid repeat freeze-thaw cycles.

### TARGET INFORMATION

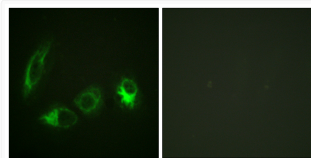
Gene ID	<a href="#">3667</a>
Gene Symbol	<a href="#">IRS1</a>
UniProt ID	<a href="#">IRS1_HUMAN</a>
Immunogen Region	289-338 aa
Specificity	Phospho-IRS-1 (S323) Polyclonal Antibody detects endogenous levels of IRS-1 protein only when phosphorylated at S323.

### ADDITIONAL INFORMATION

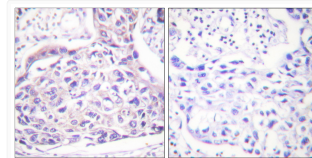
Note **STRICTLY FOR FURTHER SCIENTIFIC RESEARCH USE ONLY (RUO). MUST NOT TO BE USED IN DIAGNOSTIC OR THERAPEUTIC APPLICATIONS.**



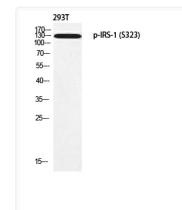
Western blot analysis of lysates from COS7 cells treated with Serum 20% 15', using IRS-1 (Phospho-Ser323) Antibody. The lane on the right is blocked with the phospho peptide.



Immunofluorescence analysis of HeLa cells, using IRS-1 (Phospho-Ser323) Antibody. The picture on the right is blocked with the phospho peptide.



Immunohistochemistry analysis of paraffin-embedded human breast carcinoma, using IRS-1 (Phospho-Ser323) Antibody. The picture on the right is blocked with the phospho peptide.



Western blot analysis of 293T using p-IRS-1 (S323) antibody. Antibody was diluted at 1:1000.