

Anti-Phospho-CBL-Tyr700 antibody (666-715 aa) (STJ91036)

GENERAL INFORMATION

Product Type	Primary antibodies
Applications	WB/IHC/IF/ELISA
Host / Source	Rabbit
Reactivity	Human/Mouse/Rat

PRODUCT PROPERTIES

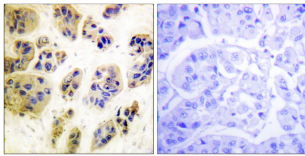
Clonality	Polyclonal
Concentration	1 mg/mL
Conjugation	Unconjugated
Purification	The antibody was affinity-purified from rabbit antiserum by affinity-chromatography using epitope-specific immunogen.
Dilution Range	WB 1:500-1:2000 IHC 1:100-1:300 IF 1:200-1:1000 ELISA 1:10000
Formulation	Liquid in PBS containing 50% Glycerol, 0.5% BSA and 0.02% Sodium Azide.
Isotype	IgG
Molecular Weight	Observed: 120kD
Storage Instruction	Store at -20°C for up to 1 year from the date of receipt, and avoid repeat freeze-thaw cycles.

TARGET INFORMATION

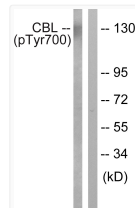
Gene ID	867
Gene Symbol	CBL
UniProt ID	CBL_HUMAN
Immunogen Region	666-715 aa
Specificity	Phospho-Cbl (Y700) Polyclonal Antibody detects endogenous levels of Cbl protein only when phosphorylated at Y700.

ADDITIONAL INFORMATION

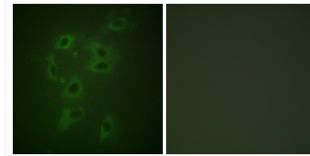
Note **STRICTLY FOR FURTHER SCIENTIFIC RESEARCH USE ONLY (RUO). MUST NOT TO BE USED IN DIAGNOSTIC OR THERAPEUTIC APPLICATIONS.**



Immunohistochemistry analysis of paraffin-embedded human breast carcinoma, using CBL (Phospho-Tyr700) Antibody. The picture on the right is blocked with the phospho peptide.



Western blot analysis of lysates from K562 cells treated with Na₃VO₄ 0.3nM, using CBL (Phospho-Tyr700) Antibody. The lane on the right is blocked with the phospho peptide.



Immunofluorescence analysis of HepG2 cells, using CBL (Phospho-Tyr700) Antibody. The picture on the right is blocked with the phospho peptide.