

Anti-Phospho-IGF-IR-Tyr1161 antibody (STJ91026)

GENERAL INFORMATION

Product Type	Primary antibodies
Applications	WB/IHC/IF/ELISA
Host / Source	Rabbit
Reactivity	Human/Mouse/Rat

PRODUCT PROPERTIES

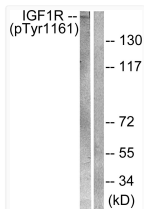
Clonality	Polyclonal
Concentration	1 mg/mL
Conjugation	Unconjugated
Purification	The antibody was affinity-purified from rabbit antiserum by affinity-chromatography using epitope-specific immunogen.
Dilution Range	WB 1:500-1:2000 IHC 1:100-1:300 IF 1:200-1:1000 ELISA 1:40000
Formulation	Liquid in PBS containing 50% Glycerol, 0.5% BSA and 0.02% Sodium Azide.
Isotype	IgG
Molecular Weight	Observed: pro:155kD, receter beta:95kD
Storage Instruction	Store at -20°C for up to 1 year from the date of receipt, and avoid repeat freeze-thaw cycles.

TARGET INFORMATION

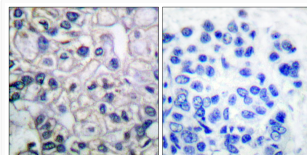
Gene ID	3480 3643
Gene Symbol	IGF1R INSR
UniProt ID	IGF1R_HUMAN INSR_HUMAN
Specificity	Phospho-IGF-IR (Y1161) Polyclonal Antibody detects endogenous levels of IGF-IR protein only when phosphorylated at Y1161.

ADDITIONAL INFORMATION

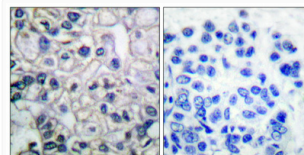
Note **STRICTLY FOR FURTHER SCIENTIFIC RESEARCH USE ONLY (RUO). MUST NOT TO BE USED IN DIAGNOSTIC OR THERAPEUTIC APPLICATIONS.**



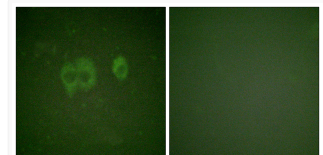
Western blot analysis of IGF1R (Phospho-Tyr1161) Antibody. The lane on the right is blocked with the IGF1R (Phospho-Tyr1161) peptide.



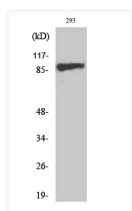
Immunohistochemistry analysis of paraffin-embedded human breast cancer, using IGF1R (Phospho-Tyr1161) Antibody. The picture on the right is blocked with the IGF1R (Phospho-Tyr1161) peptide.



Immunohistochemical analysis of paraffin-embedded Human breast cancer. Antibody was diluted at 1:100 (4°C overnight). High-pressure and temperature Tris-EDTA, pH8.0 was used for antigen retrieval. Negative contrl (right) obtained from antibody was pre-absorbed by immunogen peptide.



Immunofluorescence analysis of HuvEc cell, using IGF1R (Phospho-Tyr1161) Antibody. The lane on the right is blocked with the IGF1R (Phospho-Tyr1161) peptide.



Western blot analysis of various cells using Phospho-IGF-IR (Y1161) Polyclonal Antibody diluted at 1: 500