

## Anti-Phospho-HSP90AB1-Ser254 antibody (226-275 aa) (STJ91017)

### GENERAL INFORMATION

|               |                        |
|---------------|------------------------|
| Product Type  | Primary antibodies     |
| Applications  | WB/IHC/IF/ELISA        |
| Host / Source | Rabbit                 |
| Reactivity    | Human/Mouse/Rat/Monkey |

### PRODUCT PROPERTIES

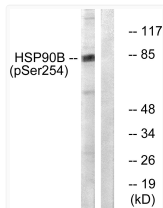
|                     |   |
|---------------------|---|
| Clonality           | Polyclonal  |
| Concentration       | 1 mg/mL   |
| Conjugation         | Unconjugated  |
| Purification        | The antibody was affinity-purified from rabbit antiserum by affinity-chromatography using epitope-specific immunogen. |
| Dilution Range      | WB 1:500-1:2000<br>IHC 1:100-1:300<br>IF 1:200-1:1000<br>ELISA 1:40000  |
| Formulation         | Liquid in PBS containing 50% Glycerol, 0.5% BSA and 0.02% Sodium Azide.   |
| Isotype             | IgG   |
| Molecular Weight    | Observed: 90kD  |
| Storage Instruction | Store at -20°C for up to 1 year from the date of receipt, and avoid repeat freeze-thaw cycles.                        |

### TARGET INFORMATION

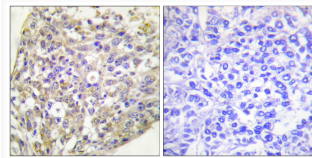
|                  |   |
|------------------|---|
| Gene ID          | <a href="#">3326</a>  |
| Gene Symbol      | <a href="#">HSP90AB1</a>  |
| UniProt ID       | <a href="#">HS90B_HUMAN</a>   |
| Immunogen Region | 226-275 aa  |
| Specificity      | Phospho-HSP90 Beta (S254) Polyclonal Antibody detects endogenous levels of HSP90 Beta protein only when phosphorylated at S254. |

### ADDITIONAL INFORMATION

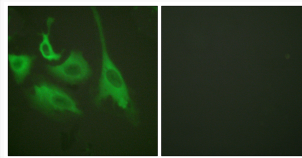
Note **STRICTLY FOR FURTHER SCIENTIFIC RESEARCH USE ONLY (RUO). MUST NOT TO BE USED IN DIAGNOSTIC OR THERAPEUTIC APPLICATIONS.**



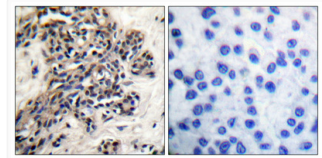
Western blot analysis of lysates from HeLa cells treated with TNF-α 10ng/ml 30', using HSP90B (Phospho-Ser254) Antibody. The lane on the right is blocked with the phospho peptide.



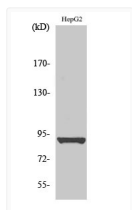
Immunohistochemistry analysis of paraffin-embedded human breast carcinoma, using HSP90B (Phospho-Ser254) Antibody. The picture on the right is blocked with the phospho peptide.



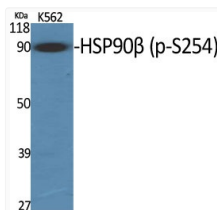
Immunofluorescence analysis of HeLa cells treated with TNF-α 20nM 15', using HSP90B (Phospho-Ser254) Antibody. The picture on the right is blocked with the phospho peptide.



Immunohistochemical analysis of paraffin-embedded Human breast cancer. Antibody was diluted at 1:100 (4°C overnight). High-pressure and temperature Tris-EDTA, pH8.0 was used for antigen retrieval. Negative control (right) obtained from antibody was pre-absorbed by immunogen peptide.



Western blot analysis of HepG2 cells using Phospho-HSP90 Beta (S254) Polyclonal Antibody



Western blot analysis of various cells using Phospho-HSP90 Beta (S254) Polyclonal Antibody