

Anti-Phospho-REL-Ser503 antibody (470-519 aa) (STJ91012)

GENERAL INFORMATION

Product Type	Primary antibodies
Applications	WB/IHC/IF/ELISA
Host / Source	Rabbit
Reactivity	Human/Rat/Mouse

PRODUCT PROPERTIES

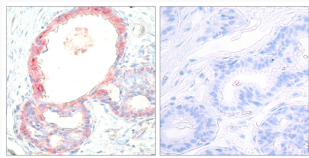
Clonality	Polyclonal
Concentration	1 mg/mL
Conjugation	Unconjugated
Purification	The antibody was affinity-purified from rabbit antiserum by affinity-chromatography using epitope-specific immunogen.
Dilution Range	WB 1:500-1:2000 IHC 1:100-1:300 ELISA 1:5000 IF 1:50-200
Formulation	Liquid in PBS containing 50% Glycerol, 0.5% BSA and 0.02% Sodium Azide.
Isotype	IgG
Molecular Weight	Calculated: 69kD
Storage Instruction	Store at -20°C for up to 1 year from the date of receipt, and avoid repeat freeze-thaw cycles.

TARGET INFORMATION

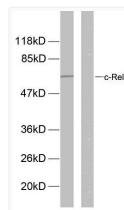
Gene ID	5966
Gene Symbol	REL
UniProt ID	REL_HUMAN
Immunogen Region	470-519 aa
Specificity	Phospho-c-Rel (S503) Polyclonal Antibody detects endogenous levels of c-Rel protein only when phosphorylated at S503.

ADDITIONAL INFORMATION

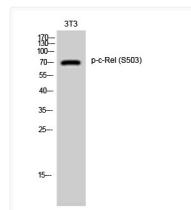
Note **STRICTLY FOR FURTHER SCIENTIFIC RESEARCH USE ONLY (RUO). MUST NOT TO BE USED IN DIAGNOSTIC OR THERAPEUTIC APPLICATIONS.**



Immunohistochemistry analysis of paraffin-embedded human breast carcinoma, using Rel (Phospho-Ser503) Antibody. The picture on the right is blocked with the phospho peptide.



Western blot analysis of lysates from MDA-MB-435 cells, using Rel (Phospho-Ser503) Antibody. The lane on the right is blocked with the phospho peptide.



Western blot analysis of 3T3 cells using Phospho-c-Rel (S503) Polyclonal Antibody diluted at 1:1000 cells nucleus extracted by Minute™ Cytoplasmic and Nuclear Fractionation kit (SC-003, Inventibiotech, MN, USA).