

Anti-Phospho-PRKCD-Ser645 antibody (612-661 aa) (STJ91011)

GENERAL INFORMATION

Product Type	Primary antibodies
Applications	WB/IHC/IF/ELISA
Host / Source	Rabbit
Reactivity	Human/Monkey

PRODUCT PROPERTIES

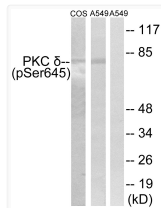
Clonality	Polyclonal
Concentration	1 mg/mL
Conjugation	Unconjugated
Purification	The antibody was affinity-purified from rabbit antiserum by affinity-chromatography using epitope-specific immunogen.
Dilution Range	WB 1:500-1:2000 IHC 1:100-1:300 ELISA 1:10000 IF 1:50-200
Formulation	Liquid in PBS containing 50% Glycerol, 0.5% BSA and 0.02% Sodium Azide.
Isotype	IgG
Molecular Weight	Observed: 77kD
Storage Instruction	Store at -20°C for up to 1 year from the date of receipt, and avoid repeat freeze-thaw cycles.

TARGET INFORMATION

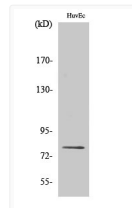
Gene ID	5580
Gene Symbol	PRKCD
UniProt ID	KPCD_HUMAN
Immunogen Region	612-661 aa
Specificity	Phospho-PKC Delta (S645) Polyclonal Antibody detects endogenous levels of PKC Delta protein only when phosphorylated at S645.

ADDITIONAL INFORMATION

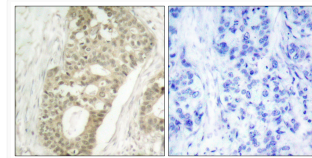
Note STRICTLY FOR FURTHER SCIENTIFIC RESEARCH USE ONLY (RUO). MUST NOT TO BE USED IN DIAGNOSTIC OR THERAPEUTIC APPLICATIONS.



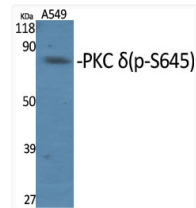
Western blot analysis of lysates from COS7 cells and A549 cells, using PKC delta (Phospho-Ser645) Antibody. The lane on the right is blocked with the phospho peptide.



Western blot analysis of HuvEc cells using Phospho-PKC Delta (S645) Polyclonal Antibody diluted at 1 : 1000



Immunohistochemistry analysis of paraffin-embedded human breast carcinoma, using PKC delta (Phospho-Ser645) Antibody. The picture on the right is blocked with the phospho peptide.



Western blot analysis of various cells using Phospho-PKC Delta (S645) Polyclonal Antibody diluted at 1 : 1000