

Anti-Phospho-STAT1-Ser727 antibody (694-743 aa) (STJ91002)

GENERAL INFORMATION

Product Type	Primary antibodies
Applications	WB/IHC/IF/ELISA
Host / Source	Rabbit
Reactivity	Human/Mouse/Rat

PRODUCT PROPERTIES

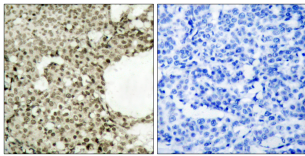
Clonality	Polyclonal
Concentration	1 mg/mL
Conjugation	Unconjugated
Purification	The antibody was affinity-purified from rabbit antiserum by affinity-chromatography using epitope-specific immunogen.
Dilution Range	WB 1:500-1:2000 IHC 1:100-1:300 ELISA 1:10000 IF 1:50-200
Formulation	Liquid in PBS containing 50% Glycerol, 0.5% BSA and 0.02% Sodium Azide.
Isotype	IgG
Molecular Weight	Observed: 87kD
Storage Instruction	Store at -20°C for up to 1 year from the date of receipt, and avoid repeat freeze-thaw cycles.

TARGET INFORMATION

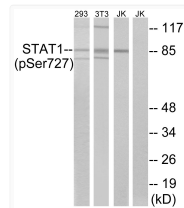
Gene ID	6772
Gene Symbol	STAT1
UniProt ID	STAT1_HUMAN
Immunogen Region	694-743 aa
Specificity	Phospho-Stat1 (S727) Polyclonal Antibody detects endogenous levels of Stat1 protein only when phosphorylated at S727.

ADDITIONAL INFORMATION

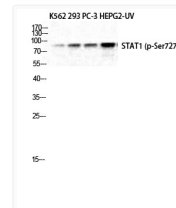
Note **STRICTLY FOR FURTHER SCIENTIFIC RESEARCH USE ONLY (RUO). MUST NOT TO BE USED IN DIAGNOSTIC OR THERAPEUTIC APPLICATIONS.**



Immunohistochemistry analysis of paraffin-embedded human breast carcinoma, using STAT1 (Phospho-Ser727) Antibody. The picture on the right is blocked with the phospho peptide.



Western blot analysis of lysates from 293 cells, 3T3 cells treated with UV (15mins) and Jurkat cells treated with eto (25uM, 24hours), using STAT1 (Phospho-Ser727) Antibody. The lane on the right is blocked with the phospho peptide.



Western blot analysis of K562 293 PC-3 HepG2-UV cells using Phospho-Stat1 (S727) Polyclonal Antibody diluted at 1: 1000.