

Anti-Phospho-NCF1-Ser345 antibody (311-360 aa) (STJ90988)

GENERAL INFORMATION

Product Type	Primary antibodies
Applications	WB/IHC/IF/ELISA
Host / Source	Rabbit
Reactivity	Human/Rat/Mouse

PRODUCT PROPERTIES

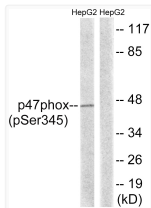
Clonality	Polyclonal
Concentration	1 mg/mL
Conjugation	Unconjugated
Purification	The antibody was affinity-purified from rabbit antiserum by affinity-chromatography using epitope-specific immunogen.
Dilution Range	WB 1:500-1:2000 IHC 1:100-1:300 ELISA 1:5000 IF 1:50-200
Formulation	Liquid in PBS containing 50% Glycerol, 0.5% BSA and 0.02% Sodium Azide.
Isotype	IgG
Molecular Weight	Observed: 45kD
Storage Instruction	Store at -20°C for up to 1 year from the date of receipt, and avoid repeat freeze-thaw cycles.

TARGET INFORMATION

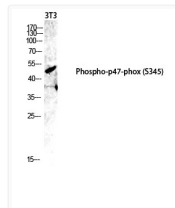
Gene ID	653361
Gene Symbol	NCF1
UniProt ID	NCF1_HUMAN
Immunogen Region	311-360 aa
Specificity	Phospho-p47-phox (S345) Polyclonal Antibody detects endogenous levels of p47-phox protein only when phosphorylated at S345.

ADDITIONAL INFORMATION

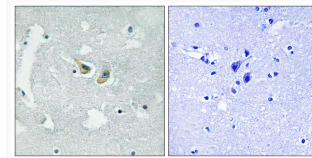
Note **STRICTLY FOR FURTHER SCIENTIFIC RESEARCH USE ONLY (RUO). MUST NOT TO BE USED IN DIAGNOSTIC OR THERAPEUTIC APPLICATIONS.**



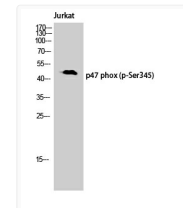
Western blot analysis of lysates from HepG2 cells treated with TNF 20ng/ml 5', using p47 phox (Phospho-Ser345) Antibody. The lane on the right is blocked with the phospho peptide.



Western blot analysis of 3T3 lysis using Phospho-p47-phox (S345) antibody. Antibody was diluted at 1:1000



Immunohistochemistry analysis of paraffin-embedded human brain, using p47 phox (Phospho-Ser345) Antibody. The picture on the right is blocked with the phospho peptide.



Western blot analysis of Jurkat cells using Phospho-p47-phox (S345) Polyclonal Antibody diluted at 1 : 1000