

## Anti-Phospho-FOS-Thr232 antibody (201-250 aa) (STJ90964)

### GENERAL INFORMATION

Product Type	Primary antibodies
Applications	WB/IHC/IF/ELISA
Host / Source	Rabbit
Reactivity	Human/Mouse/Rat

### PRODUCT PROPERTIES

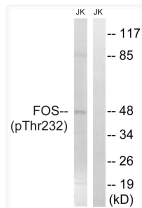
Clonality	Polyclonal
Concentration	1 mg/mL
Conjugation	Unconjugated
Purification	The antibody was affinity-purified from rabbit antiserum by affinity-chromatography using epitope-specific immunogen.
Dilution Range	WB 1:500-1:2000 IHC 1:100-1:300 ELISA 1:20000 IF 1:50-200
Formulation	Liquid in PBS containing 50% Glycerol, 0.5% BSA and 0.02% Sodium Azide.
Isotype	IgG
Molecular Weight	Observed: 62kD
Storage Instruction	Store at -20°C for up to 1 year from the date of receipt, and avoid repeat freeze-thaw cycles.

### TARGET INFORMATION

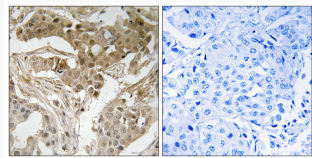
Gene ID	<a href="#">2353</a>
Gene Symbol	<a href="#">FOS</a>
UniProt ID	<a href="#">FOS_HUMAN</a>
Immunogen Region	201-250 aa
Specificity	Phospho-c-Fos (T232) Polyclonal Antibody detects endogenous levels of c-Fos protein only when phosphorylated at T232.

### ADDITIONAL INFORMATION

Note **STRICTLY FOR FURTHER SCIENTIFIC RESEARCH USE ONLY (RUO). MUST NOT TO BE USED IN DIAGNOSTIC OR THERAPEUTIC APPLICATIONS.**



Western blot analysis of lysates from Jurkat cells treated with EGF 200ng/ml 5', using FOS (Phospho-Thr232) Antibody. The lane on the right is blocked with the phospho peptide.



Immunohistochemistry analysis of paraffin-embedded human breast carcinoma, using FOS (Phospho-Thr232) Antibody. The picture on the right is blocked with the phospho peptide.