

## Anti-Phospho-MerTK/Tyro3-Tyr749/681 antibody (716-765 aa) (STJ90948)

### GENERAL INFORMATION

Product Type	Primary antibodies
Applications	WB/IHC/IF/ELISA
Host / Source	Rabbit
Reactivity	Human/Mouse/Rat

### PRODUCT PROPERTIES

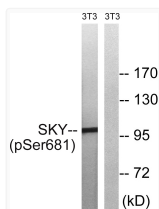
Clonality	Polyclonal
Concentration	1 mg/mL
Conjugation	Unconjugated
Purification	The antibody was affinity-purified from rabbit antiserum by affinity-chromatography using epitope-specific immunogen.
Dilution Range	WB 1:500-1:2000 IHC 1:100-1:300 ELISA 1:10000 IF 1:50-200
Formulation	Liquid in PBS containing 50% Glycerol, 0.5% BSA and 0.02% Sodium Azide.
Isotype	IgG
Molecular Weight	Observed: 97kD
Storage Instruction	Store at -20°C for up to 1 year from the date of receipt, and avoid repeat freeze-thaw cycles.

### TARGET INFORMATION

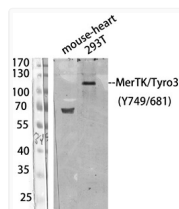
Gene ID	<a href="#">10461</a> <a href="#">7301</a>
Gene Symbol	<a href="#">MERTK</a> <a href="#">TYRO3</a>
UniProt ID	<a href="#">MERTK_HUMAN</a> <a href="#">TYRO3_HUMAN</a>
Immunogen Region	716-765 aa
Specificity	Phospho-MerTK/Tyro3 (Y749/681) Polyclonal Antibody detects endogenous levels of MerTK/Tyro3 protein only when phosphorylated at Y749/681.

### ADDITIONAL INFORMATION

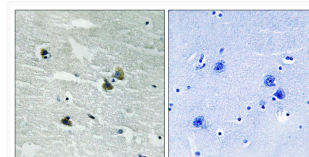
Note **STRICTLY FOR FURTHER SCIENTIFIC RESEARCH USE ONLY (RUO). MUST NOT TO BE USED IN DIAGNOSTIC OR THERAPEUTIC APPLICATIONS.**



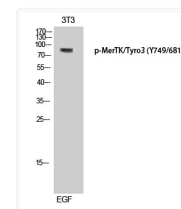
Western blot analysis of lysates from NIH/3T3 cells treated with EGF 200ng/ml 5', using MER/SKY (Phospho-Tyr749/681) Antibody. The lane on the right is blocked with the phospho peptide.



Western blot analysis of 293T/mouse-heart using Antibody diluted at 1:1000. Secondary antibody was diluted at 1:20000



Immunohistochemistry analysis of paraffin-embedded human brain, using MER/SKY (Phospho-Tyr749/681) Antibody. The picture on the right is blocked with the phospho peptide.



Western blot analysis of 3T3 cells using Phospho-MerTK/Tyro3 (Y749/681) Polyclonal Antibody diluted at 1: 500