

## Anti-Phospho-MAP3K1-Thr1402 antibody (1368-1417 aa) (STJ90946)

### GENERAL INFORMATION

Product Type	Primary antibodies
Applications	WB/IHC/IF/ELISA
Host / Source	Rabbit
Reactivity	Human/Mouse/Rat

### PRODUCT PROPERTIES

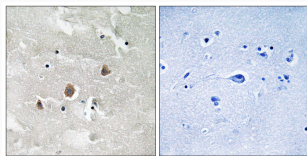
Clonality	Polyclonal
Concentration	1 mg/mL
Conjugation	Unconjugated
Purification	The antibody was affinity-purified from rabbit antiserum by affinity-chromatography using epitope-specific immunogen.
Dilution Range	WB 1:500-1:2000 IHC 1:100-1:300 ELISA 1:40000 IF 1:50-200
Formulation	Liquid in PBS containing 50% Glycerol, 0.5% BSA and 0.02% Sodium Azide.
Isotype	IgG
Molecular Weight	Observed: 160kD
Storage Instruction	Store at -20°C for up to 1 year from the date of receipt, and avoid repeat freeze-thaw cycles.

### TARGET INFORMATION

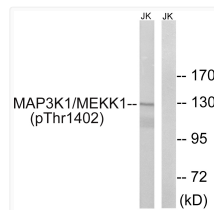
Gene ID	<a href="#">4214</a>
Gene Symbol	<a href="#">MAP3K1</a>
UniProt ID	<a href="#">M3K1_HUMAN</a>
Immunogen Region	1368-1417 aa
Specificity	Phospho-MEK Kinase-1 (T1402) Polyclonal Antibody detects endogenous levels of MEK Kinase-1 protein only when phosphorylated at T1402.

### ADDITIONAL INFORMATION

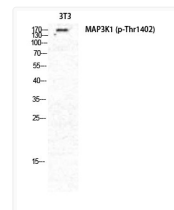
Note **STRICTLY FOR FURTHER SCIENTIFIC RESEARCH USE ONLY (RUO). MUST NOT TO BE USED IN DIAGNOSTIC OR THERAPEUTIC APPLICATIONS.**



Immunohistochemistry analysis of paraffin-embedded human brain, using MAP3K1 (Phospho-Thr1402) Antibody. The picture on the right is blocked with the phospho peptide.



Western blot analysis of lysates from Jurkat cells, using MAP3K1 (Phospho-Thr1402) Antibody. The lane on the right is blocked with the phospho peptide.



Western blot analysis of NIH-3T3 cells using Phospho-MEK Kinase-1 (T1402) Polyclonal Antibody diluted at 1: 2000