

Anti-Phospho-Akt1/3-Tyr437/434 antibody (406-455 aa) (STJ90938)

GENERAL INFORMATION

Product Type	Primary antibodies
Applications	WB/IHC/IF/ELISA
Host / Source	Rabbit
Reactivity	Human/Mouse/Rat

PRODUCT PROPERTIES

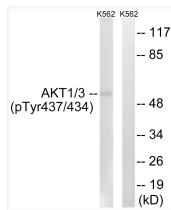
Clonality	Polyclonal
Concentration	1 mg/mL
Conjugation	Unconjugated
Purification	The antibody was affinity-purified from rabbit antiserum by affinity-chromatography using epitope-specific immunogen.
Dilution Range	WB 1:500-1:2000 IHC 1:100-1:300 ELISA 1:20000 IF 1:50-200
Formulation	Liquid in PBS containing 50% Glycerol, 0.5% BSA and 0.02% Sodium Azide.
Isotype	IgG
Molecular Weight	Observed: 56kD
Storage Instruction	Store at -20°C for up to 1 year from the date of receipt, and avoid repeat freeze-thaw cycles.

TARGET INFORMATION

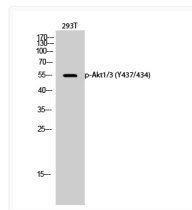
Gene ID	207 10000
Gene Symbol	AKT1 AKT3
UniProt ID	AKT1_HUMAN AKT3_HUMAN
Immunogen Region	406-455 aa
Specificity	Phospho-Akt1/3 (Y437/434) Polyclonal Antibody detects endogenous levels of Akt1/3 protein only when phosphorylated at Y437/434.

ADDITIONAL INFORMATION

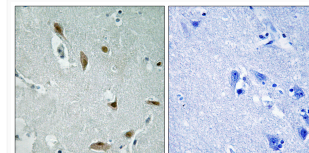
Note **STRICTLY FOR FURTHER SCIENTIFIC RESEARCH USE ONLY (RUO). MUST NOT TO BE USED IN DIAGNOSTIC OR THERAPEUTIC APPLICATIONS.**



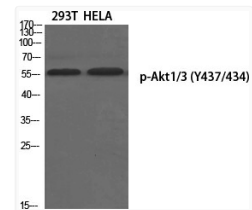
Western blot analysis of lysates from K562 cells treated with insulin 0.01U/ml 15', using AKT1/3 (Phospho-Tyr437/434) Antibody. The lane on the right is blocked with the phospho peptide.



Western blot analysis of 293T cells using Phospho-Akt1/3 (Y437/434) Polyclonal Antibody diluted at 1 : 1000



Immunohistochemistry analysis of paraffin-embedded human brain, using AKT1/3 (Phospho-Tyr437/434) Antibody. The picture on the right is blocked with the phospho peptide.



Western blot analysis of various cells using Phospho-Akt1/3 (Y437/434) Polyclonal Antibody diluted at 1 : 1000