

Anti-Phospho-ITGB4-Tyr1510 antibody (1481-1530 aa) (STJ90915)

GENERAL INFORMATION

Product Type	Primary antibodies
Applications	WB/IHC/IF/ELISA
Host / Source	Rabbit
Reactivity	Human/Mouse/Rat

PRODUCT PROPERTIES

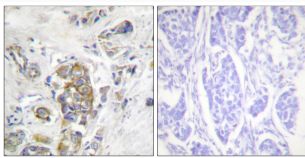
Clonality	Polyclonal
Concentration	1 mg/mL
Conjugation	Unconjugated
Purification	The antibody was affinity-purified from rabbit antiserum by affinity-chromatography using epitope-specific immunogen.
Dilution Range	WB 1:500-1:2000 IHC 1:100-1:300 ELISA 1:10000 IF 1:50-200
Formulation	Liquid in PBS containing 50% Glycerol, 0.5% BSA and 0.02% Sodium Azide.
Isotype	IgG
Molecular Weight	Observed: 202kD
Storage Instruction	Store at -20°C for up to 1 year from the date of receipt, and avoid repeat freeze-thaw cycles.

TARGET INFORMATION

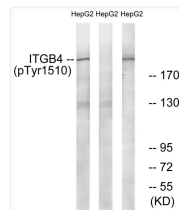
Gene ID	3691
Gene Symbol	ITGB4
UniProt ID	ITB4_HUMAN
Immunogen Region	1481-1530 aa
Specificity	Phospho-Integrin Beta 4 (Y1510) Polyclonal Antibody detects endogenous levels of Integrin Beta 4 protein only when phosphorylated at Y1510.

ADDITIONAL INFORMATION

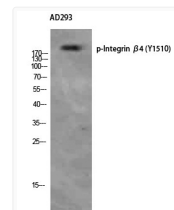
Note **STRICTLY FOR FURTHER SCIENTIFIC RESEARCH USE ONLY (RUO). MUST NOT TO BE USED IN DIAGNOSTIC OR THERAPEUTIC APPLICATIONS.**



Immunohistochemistry analysis of paraffin-embedded human breast carcinoma, using ITGB4 (Phospho-Tyr1510) Antibody. The picture on the right is blocked with the phospho peptide.



Western blot analysis of lysates from HepG2 cells treated with Na₂VO₃ 0.3nM 40', using ITGB4 (Phospho-Tyr1510) Antibody. The lane on the right is blocked with the phospho peptide.



Western blot analysis of AD293 using Phospho-Integrin Beta 4 (Y1510) Polyclonal Antibody. Antibody was diluted at 1:500