

Anti-Phospho-NFKBIA-Tyr305 antibody (268-317 aa) (STJ90912)

GENERAL INFORMATION

Product Type	Primary antibodies
Applications	WB/IHC/IF/ELISA
Host / Source	Rabbit
Reactivity	Human/Mouse/Rat/Monkey

PRODUCT PROPERTIES

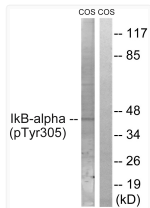
Clonality	Polyclonal
Concentration	1 mg/mL
Conjugation	Unconjugated
Purification	The antibody was affinity-purified from rabbit antiserum by affinity-chromatography using epitope-specific immunogen.
Dilution Range	WB 1:500-1:2000 IHC 1:100-1:300 ELISA 1:5000 IF 1:50-200
Formulation	Liquid in PBS containing 50% Glycerol, 0.5% BSA and 0.02% Sodium Azide.
Isotype	IgG
Molecular Weight	Observed: 40kD
Storage Instruction	Store at -20°C for up to 1 year from the date of receipt, and avoid repeat freeze-thaw cycles.

TARGET INFORMATION

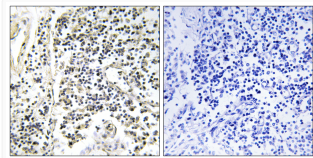
Gene ID	4792
Gene Symbol	NFKBIA
UniProt ID	IKBA_HUMAN
Immunogen Region	268-317 aa
Specificity	Phospho-I Kappa B-Alpha (Y305) Polyclonal Antibody detects endogenous levels of I Kappa B-Alpha protein only when phosphorylated at Y305.

ADDITIONAL INFORMATION

Note **STRICTLY FOR FURTHER SCIENTIFIC RESEARCH USE ONLY (RUO). MUST NOT TO BE USED IN DIAGNOSTIC OR THERAPEUTIC APPLICATIONS.**



Western blot analysis of lysates from COS7 cells treated with nocodazole 1ug/ml 16h, using IkappaB-alpha (Phospho-Tyr305) Antibody. The lane on the right is blocked with the phospho peptide.



Immunohistochemistry analysis of paraffin-embedded human lymph node, using IkappaB-alpha (Phospho-Tyr305) Antibody. The picture on the right is blocked with the phospho peptide.