

Anti-Phospho-SMAD1-Ser187 antibody (153-202 aa) (STJ90904)

GENERAL INFORMATION

Product Type	Primary antibodies
Applications	WB/IHC/IF/ELISA
Host / Source	Rabbit
Reactivity	Human/Mouse/Monkey

PRODUCT PROPERTIES

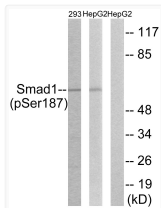
Clonality	Polyclonal
Concentration	1 mg/mL
Conjugation	Unconjugated
Purification	The antibody was affinity-purified from rabbit antiserum by affinity-chromatography using epitope-specific immunogen.
Dilution Range	WB 1:500-1:2000 IHC 1:100-1:300 ELISA 1:10000 IF 1:50-200
Formulation	Liquid in PBS containing 50% Glycerol, 0.5% BSA and 0.02% Sodium Azide.
Isotype	IgG
Molecular Weight	Observed: 60kD
Storage Instruction	Store at -20°C for up to 1 year from the date of receipt, and avoid repeat freeze-thaw cycles.

TARGET INFORMATION

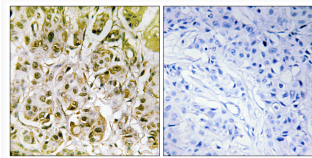
Gene ID	4086
Gene Symbol	SMAD1
UniProt ID	SMAD1_HUMAN
Immunogen Region	153-202 aa
Specificity	Phospho-Smad1 (S187) Polyclonal Antibody detects endogenous levels of Smad1 protein only when phosphorylated at S187.

ADDITIONAL INFORMATION

Note **STRICTLY FOR FURTHER SCIENTIFIC RESEARCH USE ONLY (RUO). MUST NOT TO BE USED IN DIAGNOSTIC OR THERAPEUTIC APPLICATIONS.**



Western blot analysis of lysates from 293 cells and HepG2 cells, using Smad1 (Phospho-Ser187) Antibody. The lane on the right is blocked with the phospho peptide.



Immunohistochemistry analysis of paraffin-embedded human breast carcinoma, using Smad1 (Phospho-Ser187) Antibody. The picture on the right is blocked with the phospho peptide.