

Anti-Phospho-YAP1-Ser127 antibody (93-142 aa) (STJ90868)

GENERAL INFORMATION

Product Type	Primary antibodies
Applications	IF/WB/IHC/ELISA
Host / Source	Rabbit
Reactivity	Human/Mouse/Rat/Monkey

PRODUCT PROPERTIES

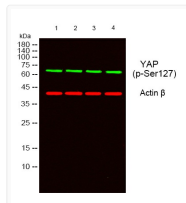
Clonality	Polyclonal
Concentration	1 mg/mL
Conjugation	Unconjugated
Purification	The antibody was affinity-purified from rabbit antiserum by affinity-chromatography using epitope-specific immunogen.
Dilution Range	IF 1:50-200 WB 1:500-1:2000 IHC 1:100-1:300 ELISA 1:40000
Formulation	Liquid in PBS containing 50% Glycerol, 0.5% BSA and 0.02% Sodium Azide.
Isotype	IgG
Molecular Weight	Observed: 65kD
Storage Instruction	Store at -20°C for up to 1 year from the date of receipt, and avoid repeat freeze-thaw cycles.

TARGET INFORMATION

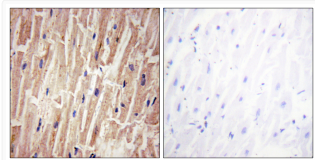
Gene ID	10413
Gene Symbol	YAP1
UniProt ID	YAP1_HUMAN
Immunogen Region	93-142 aa
Specificity	Phospho-YAP (S127) Polyclonal Antibody detects endogenous levels of YAP protein only when phosphorylated at S127.

ADDITIONAL INFORMATION

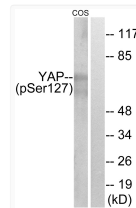
Note **STRICTLY FOR FURTHER SCIENTIFIC RESEARCH USE ONLY (RUO). MUST NOT TO BE USED IN DIAGNOSTIC OR THERAPEUTIC APPLICATIONS.**



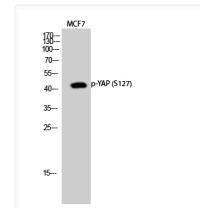
Western blot analysis of lysates from 1) MCF-7, 2) PC-3, 3) KB, 4) HELA cells, (Green) primary antibody was diluted at 1:1000, 4°C over night, secondary antibody (cat: (NA) was diluted at 1:10000, 37°C 1hour. (Red) Actin Beta monoclonal antibody (5B7) (cat: (STJ96930) antibody was diluted at 1:5000 as loading control, 4°C over night, secondary antibody (cat: (NA) was diluted at 1:10000, 37°C 1hour.



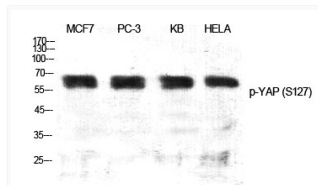
Immunohistochemistry analysis of paraffin-embedded human heart, using YAP (Phospho-Ser127) Antibody. The picture on the right is blocked with the phospho peptide.



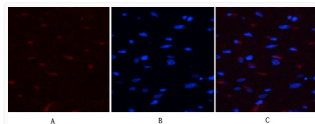
Western blot analysis of lysates from COS7 cells treated with HU 2nM 24h, using YAP (Phospho-Ser127) Antibody. The lane on the right is blocked with the phospho peptide.



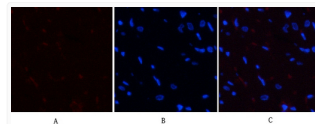
Western blot analysis of MCF7 cells using Phospho-YAP (S127) Polyclonal Antibody diluted at 1: 500 cells nucleus extracted by Minute TM Cytoplasmic and Nuclear Fractionation kit (SC-003, Inventibiotech, MN, USA).



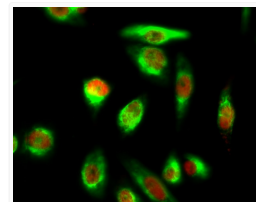
Western blot analysis of various cells using Phospho-YAP (S127) Polyclonal Antibody diluted at 1: 500 cells nucleus extracted by Minute TM Cytoplasmic and Nuclear Fractionation kit (SC-003, Inventibiotech, MN, USA).



Immunofluorescence analysis of rat-heart tissue. 1, YAP (phospho Ser127) Polyclonal Antibody (red) was diluted at 1:200 (4°C, overnight). 2, Cy3 labeled Secondary antibody was diluted at 1:300 (room temperature, 50min).3, Picture B: DAPI (blue) 10min. Picture A:Target. Picture B: DAPI. Picture C: merge of A+B



Immunofluorescence analysis of rat-heart tissue. 1, YAP (phospho Ser127) Polyclonal Antibody (red) was diluted at 1:200 (4°C, overnight). 2, Cy3 labeled Secondary antibody was diluted at 1:300 (room temperature, 50min).3, Picture B: DAPI (blue) 10min. Picture A:Target. Picture B: DAPI. Picture C: merge of A+B



Immunofluorescence analysis of HELA cell. 1, YAP (phospho Ser127) Polyclonal Antibody (red) was diluted at 1:200 (4°C overnight). Beta-Tubulin monoclonal antibody (5G3) (green) was diluted at 1:200 (4°C overnight). 2, Goat Anti Rabbit Alexa Fluor 594 Catalog: (NA was diluted at 1:1000 (room temperature, 50min). Goat Anti Mouse Alexa Fluor 488 Catalog: (NA was diluted at 1:1000 (room temperature, 50min).