

## Anti-Phospho-PLCB3-Ser537 antibody (503-552 aa) (STJ90867)

### GENERAL INFORMATION

Product Type	Primary antibodies
Applications	WB/IHC/IF/ELISA
Host / Source	Rabbit
Reactivity	Human/Mouse/Rat

### PRODUCT PROPERTIES

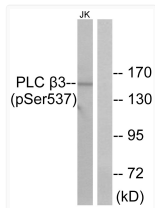
Clonality	Polyclonal
Concentration	1 mg/mL
Conjugation	Unconjugated
Purification	The antibody was affinity-purified from rabbit antiserum by affinity-chromatography using epitope-specific immunogen.
Dilution Range	WB 1:500-1:2000 IHC 1:100-1:300 ELISA 1:10000 IF 1:50-200
Formulation	Liquid in PBS containing 50% Glycerol, 0.5% BSA and 0.02% Sodium Azide.
Isotype	IgG
Molecular Weight	Observed: 150kD
Storage Instruction	Store at -20°C for up to 1 year from the date of receipt, and avoid repeat freeze-thaw cycles.

### TARGET INFORMATION

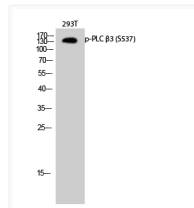
Gene ID	<a href="#">5331</a>
Gene Symbol	<a href="#">PLCB3</a>
UniProt ID	<a href="#">PLCB3_HUMAN</a>
Immunogen Region	503-552 aa
Specificity	Phospho-PLC Beta 3 (S537) Polyclonal Antibody detects endogenous levels of PLC Beta 3 protein only when phosphorylated at S537.

### ADDITIONAL INFORMATION

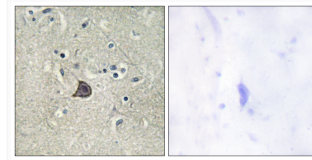
Note **STRICTLY FOR FURTHER SCIENTIFIC RESEARCH USE ONLY (RUO). MUST NOT TO BE USED IN DIAGNOSTIC OR THERAPEUTIC APPLICATIONS.**



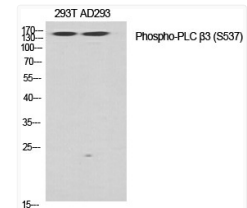
Western blot analysis of lysates from Jurkat cells treated with UV 15', using PLC beta3 (Phospho-Ser537) Antibody. The lane on the right is blocked with the phospho peptide.



Western blot analysis of 293T cells using Phospho-PLC Beta 3 (S537) Polyclonal Antibody diluted at 1: 500



Immunohistochemistry analysis of paraffin-embedded human brain, using PLC beta3 (Phospho-Ser537) Antibody. The picture on the right is blocked with the phospho peptide.



Western blot analysis of various cells using Phospho-PLC Beta 3 (S537) Polyclonal Antibody diluted at 1: 500