

Anti-Phospho-PKD1/2/3-Ser738/S742 antibody (706-755 aa) (STJ90866)

GENERAL INFORMATION

Product Type	Primary antibodies
Applications	WB/IHC/IF/ELISA
Host / Source	Rabbit
Reactivity	Human/Mouse/Rat

PRODUCT PROPERTIES

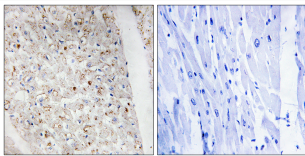
Clonality	Polyclonal
Concentration	1 mg/mL
Conjugation	Unconjugated
Purification	The antibody was affinity-purified from rabbit antiserum by affinity-chromatography using epitope-specific immunogen.
Dilution Range	WB 1:500-1:2000 IHC 1:100-1:300 ELISA 1:5000 IF 1:50-200
Formulation	Liquid in PBS containing 50% Glycerol, 0.5% BSA and 0.02% Sodium Azide.
Isotype	IgG
Molecular Weight	Observed: 101kD
Storage Instruction	Store at -20°C for up to 1 year from the date of receipt, and avoid repeat freeze-thaw cycles.

TARGET INFORMATION

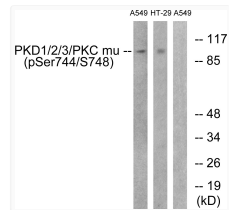
Gene ID	5587 25865 23683 PRKD1 PRKD2 KPCD1_HUMAN KPCD2_HUMAN KPCD3_HUMAN
Immunogen Region	706-755 aa
Specificity	Phospho-PKD1/2/3 (S738/S742) Polyclonal Antibody detects endogenous levels of PKD1/2/3 protein only when phosphorylated at S738/S742.

ADDITIONAL INFORMATION

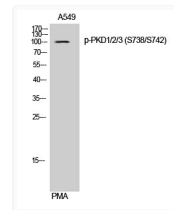
Note **STRICTLY FOR FURTHER SCIENTIFIC RESEARCH USE ONLY (RUO). MUST NOT TO BE USED IN DIAGNOSTIC OR THERAPEUTIC APPLICATIONS.**



Immunohistochemistry analysis of paraffin-embedded human heart, using PKD1/2/3/PKC mu (Phospho-Ser738+Ser742) Antibody. The picture on the right is blocked with the phospho peptide.



Western blot analysis of lysates from A549 cells treated with PMA 125ng/ml 30' and HT29 cells treated with serum 20% 15', using PKD1/2/3/PKC mu (Phospho-Ser738+Ser742) Antibody. The lane on the right is blocked with the phospho peptide.



Western blot analysis of A549 cells using Phospho-PKD1/2/3 (S738/S742) Polyclonal Antibody