

Anti-Phospho-BCAR1-Tyr249 antibody (215-264 aa) (STJ90858)

GENERAL INFORMATION

Product Type	Primary antibodies
Applications	WB/IHC/IF/ELISA
Host / Source	Rabbit
Reactivity	Human/Mouse/Rat

PRODUCT PROPERTIES

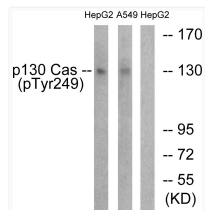
Clonality	Polyclonal
Concentration	1 mg/mL
Conjugation	Unconjugated
Purification	The antibody was affinity-purified from rabbit antiserum by affinity-chromatography using epitope-specific immunogen.
Dilution Range	WB 1:500-1:2000 IHC 1:100-1:300 ELISA 1:10000 IF 1:50-200
Formulation	Liquid in PBS containing 50% Glycerol, 0.5% BSA and 0.02% Sodium Azide.
Isotype	IgG
Molecular Weight	Observed: 130kD
Storage Instruction	Store at -20°C for up to 1 year from the date of receipt, and avoid repeat freeze-thaw cycles.

TARGET INFORMATION

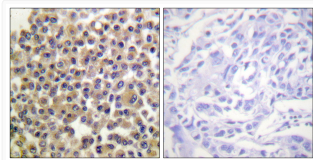
Gene ID	9564
Gene Symbol	BCAR1
UniProt ID	BCAR1_HUMAN
Immunogen Region	215-264 aa
Specificity	Phospho-p130 Cas (Y249) Polyclonal Antibody detects endogenous levels of p130 Cas protein only when phosphorylated at Y249.

ADDITIONAL INFORMATION

Note **STRICTLY FOR FURTHER SCIENTIFIC RESEARCH USE ONLY (RUO). MUST NOT TO BE USED IN DIAGNOSTIC OR THERAPEUTIC APPLICATIONS.**



Western blot analysis of lysates from HepG2 cells treated with EGF 200ng/ml 30' and A549 cells treated with PMA 125ng/ml 30', using p130 Cas (Phospho-Tyr249) Antibody. The lane on the right is blocked with the phospho peptide.



Immunohistochemistry analysis of paraffin-embedded human breast carcinoma, using p130 Cas (Phospho-Tyr249) Antibody. The picture on the right is blocked with the phospho peptide.