

Anti-Phospho-GRIN1-Ser896 antibody (862-911 aa) (STJ90856)

GENERAL INFORMATION

Product Type	Primary antibodies
Applications	WB/IHC/IF/ELISA
Host / Source	Rabbit
Reactivity	Human/Mouse/Rat

PRODUCT PROPERTIES

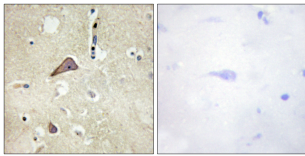
Clonality	Polyclonal
Concentration	1 mg/mL
Conjugation	Unconjugated
Purification	The antibody was affinity-purified from rabbit antiserum by affinity-chromatography using epitope-specific immunogen.
Dilution Range	WB 1:500-1:2000 IHC 1:100-1:300 ELISA 1:40000 IF 1:50-200
Formulation	Liquid in PBS containing 50% Glycerol, 0.5% BSA and 0.02% Sodium Azide.
Isotype	IgG
Molecular Weight	Observed: 105kD
Storage Instruction	Store at -20°C for up to 1 year from the date of receipt, and avoid repeat freeze-thaw cycles.

TARGET INFORMATION

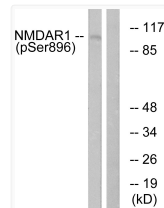
Gene ID	2902
Gene Symbol	GRIN1
UniProt ID	NMDZ1_HUMAN
Immunogen Region	862-911 aa
Specificity	Phospho-NMDA Zeta 1 (S896) Polyclonal Antibody detects endogenous levels of NMDA Zeta 1 protein only when phosphorylated at S896.

ADDITIONAL INFORMATION

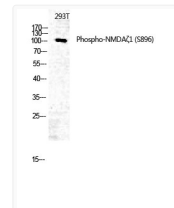
Note **STRICTLY FOR FURTHER SCIENTIFIC RESEARCH USE ONLY (RUO). MUST NOT TO BE USED IN DIAGNOSTIC OR THERAPEUTIC APPLICATIONS.**



Immunohistochemistry analysis of paraffin-embedded human brain, using NMDAR1 (Phospho-Ser896) Antibody. The picture on the right is blocked with the phospho peptide.



Western blot analysis of lysates from K562 cells treated with PMA 125ng/ml 30', using NMDAR1 (Phospho-Ser896) Antibody. The lane on the right is blocked with the phospho peptide.



Western blot analysis of 293T using Phospho-NMDA Zeta 1 (S896) Polyclonal Antibody. Antibody was diluted at 1:500