

Anti-Phospho-FLT1-Tyr1333 antibody (1289-1338 aa) (STJ90838)

GENERAL INFORMATION

Product Type	Primary antibodies
Applications	WB/IHC/IF/ELISA
Host / Source	Rabbit
Reactivity	Human/Mouse/Rat

PRODUCT PROPERTIES

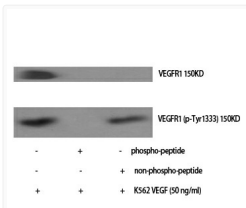
Clonality	Polyclonal
Concentration	1 mg/mL
Conjugation	Unconjugated
Purification	The antibody was affinity-purified from rabbit antiserum by affinity-chromatography using epitope-specific immunogen.
Dilution Range	WB 1:500-1:2000 IHC-P 1:100-300 ELISA 1:20000 IF 1:100-300
Formulation	Liquid in PBS containing 50% Glycerol, 0.5% BSA and 0.02% Sodium Azide.
Isotype	IgG
Molecular Weight	Observed: 151kD
Storage Instruction	Store at -20°C for up to 1 year from the date of receipt, and avoid repeat freeze-thaw cycles.

TARGET INFORMATION

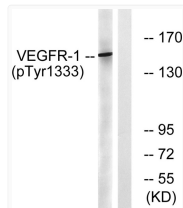
Gene ID	2321
Gene Symbol	FLT1
UniProt ID	VGFR1_HUMAN
Immunogen Region	1289-1338 aa
Specificity	Phospho-Flt-1 (Y1333) Polyclonal Antibody detects endogenous levels of Flt-1 protein only when phosphorylated at Y1333.

ADDITIONAL INFORMATION

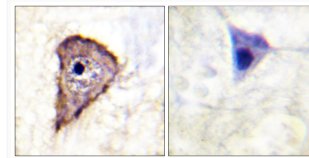
Note STRICTLY FOR FURTHER SCIENTIFIC RESEARCH USE ONLY (RUO). MUST NOT TO BE USED IN DIAGNOSTIC OR THERAPEUTIC APPLICATIONS.



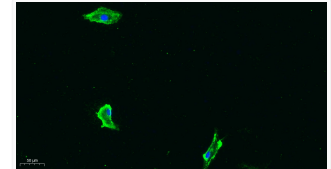
Western Blot analysis of various cells using Phospho-Flt-1 (Y1333) Polyclonal Antibody STJ90838



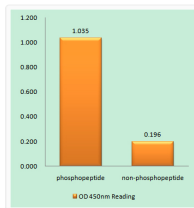
Western blot analysis of lysates from K562 cells treated with etoposide 25 μM 24 h, using VEGFR1 (Phospho-Tyr1333) STJ90838



Immunohistochemistry analysis of paraffin-embedded human brain using VEGFR1 (Phospho-Tyr1333) Antibody. The picture on STJ90838



Immunofluorescence analysis of A549. 1, primary antibody was diluted at 1:200 (4°C overnight). 2, Goat Anti Rabbit IgG STJ90838



Enzyme-Linked Immunosorbent Assay (Phospho-ELISA) for Immunogen Phosphopeptide (Phospho-left) and Non-Phosphopeptide STJ90838