

Anti-Phospho-GRIN2B-Tyr1474 antibody (1435-1484 aa) (STJ90823)

GENERAL INFORMATION

Product Type	Primary antibodies
Applications	WB/IHC/IF/ELISA
Host / Source	Rabbit
Reactivity	Human/Mouse/Rat

PRODUCT PROPERTIES

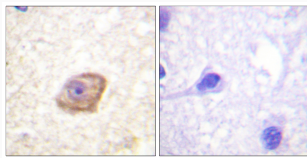
Clonality	Polyclonal
Concentration	1 mg/mL
Conjugation	Unconjugated
Purification	The antibody was affinity-purified from rabbit antiserum by affinity-chromatography using epitope-specific immunogen.
Dilution Range	WB 1:500-1:2000 IHC 1:100-1:300 ELISA 1:5000 IF 1:50-200
Formulation	Liquid in PBS containing 50% Glycerol, 0.5% BSA and 0.02% Sodium Azide.
Isotype	IgG
Molecular Weight	Observed: 165kD
Storage Instruction	Store at -20°C for up to 1 year from the date of receipt, and avoid repeat freeze-thaw cycles.

TARGET INFORMATION

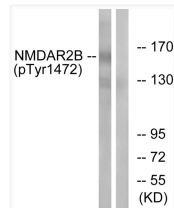
Gene ID	2904
Gene Symbol	GRIN2B
UniProt ID	NMDE2_HUMAN
Immunogen Region	1435-1484 aa
Specificity	Phospho-NMDA Epsilon 2 (Y1474) Polyclonal Antibody detects endogenous levels of NMDA Epsilon 2 protein only when phosphorylated at Y1474.

ADDITIONAL INFORMATION

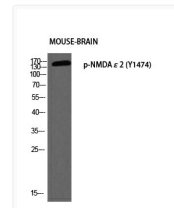
Note **STRICTLY FOR FURTHER SCIENTIFIC RESEARCH USE ONLY (RUO). MUST NOT TO BE USED IN DIAGNOSTIC OR THERAPEUTIC APPLICATIONS.**



Immunohistochemistry analysis of paraffin-embedded human brain, using NMDAR2B (Phospho-Tyr1474) Antibody. The picture on the right is blocked with the phospho peptide.



Western blot analysis of lysates from Jurkat cells treated with UV 15', using NMDAR2B (Phospho-Tyr1474) Antibody. The lane on the right is blocked with the phospho peptide.



Western blot analysis of mouse brain using p-NMDA Epsilon 2 (Y1474) antibody. Antibody was diluted at 1:500