

Anti-Phospho-INSR-Tyr1361 antibody (1331-1380 aa) (STJ90816)

GENERAL INFORMATION

Product Type	Primary antibodies
Applications	WB/IHC/IF/ELISA
Host / Source	Rabbit
Reactivity	Human/Mouse/Rat

PRODUCT PROPERTIES

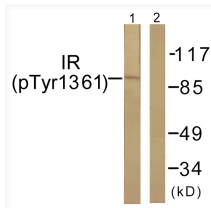
Clonality	Polyclonal
Concentration	1 mg/mL
Conjugation	Unconjugated
Purification	The antibody was affinity-purified from rabbit antiserum by affinity-chromatography using epitope-specific immunogen.
Dilution Range	WB 1:500-1:2000 IHC 1:100-1:300 ELISA 1:10000 IF 1:50-200
Formulation	Liquid in PBS containing 50% Glycerol, 0.5% BSA and 0.02% Sodium Azide.
Isotype	IgG
Molecular Weight	Observed: 95kD
Storage Instruction	Store at -20°C for up to 1 year from the date of receipt, and avoid repeat freeze-thaw cycles.

TARGET INFORMATION

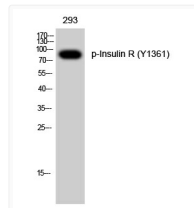
Gene ID	3643
Gene Symbol	INSR
UniProt ID	INSR_HUMAN
Immunogen Region	1331-1380 aa
Specificity	Phospho-Insulin R (Y1361) Polyclonal Antibody detects endogenous levels of Insulin R protein only when phosphorylated at Y1361.

ADDITIONAL INFORMATION

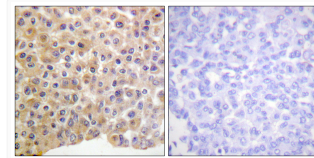
Note **STRICTLY FOR FURTHER SCIENTIFIC RESEARCH USE ONLY (RUO). MUST NOT TO BE USED IN DIAGNOSTIC OR THERAPEUTIC APPLICATIONS.**



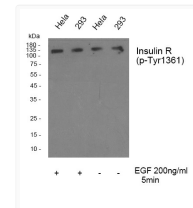
Western blot analysis of lysates from 293 cells treated with Heat shock, using IR (Phospho-Tyr1361) Antibody. The lane on the right is blocked with the phospho peptide.



Western blot analysis of 293 cells using Phospho-Insulin R (Y1361) Polyclonal Antibody.



Immunohistochemistry analysis of paraffin-embedded human breast carcinoma, using IR (Phospho-Tyr1361) Antibody. The picture on the right is blocked with the phospho peptide.



Western blot analysis of Insulin R (phospho-Tyr1361) Polyclonal Antibody, using hela, 293 cell treated or untreated with EGF 200ng/ml 30', 4°C over night, secondary antibody (cat: (NA was diluted at 1:10000, 37°C 1hour.