

Anti-Phospho-FOXO1-Ser329 antibody (295-344 aa) (STJ90812)

GENERAL INFORMATION

Product Type	Primary antibodies
Applications	WB/IHC/IF/ELISA
Host / Source	Rabbit
Reactivity	Human/Mouse/Rat

PRODUCT PROPERTIES

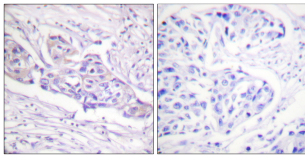
Clonality	Polyclonal
Concentration	1 mg/mL
Conjugation	Unconjugated
Purification	The antibody was affinity-purified from rabbit antiserum by affinity-chromatography using epitope-specific immunogen.
Dilution Range	WB 1:500-1:2000 IHC 1:100-1:300 ELISA 1:5000 IF 1:50-200
Formulation	Liquid in PBS containing 50% Glycerol, 0.5% BSA and 0.02% Sodium Azide.
Isotype	IgG
Molecular Weight	Observed: 70kD
Storage Instruction	Store at -20°C for up to 1 year from the date of receipt, and avoid repeat freeze-thaw cycles.

TARGET INFORMATION

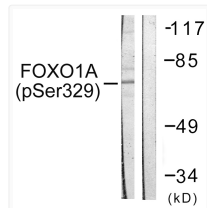
Gene ID	2308
Gene Symbol	FOXO1
UniProt ID	FOXO1_HUMAN
Immunogen Region	295-344 aa
Specificity	Phospho-FoxO1A (S329) Polyclonal Antibody detects endogenous levels of FoxO1A protein only when phosphorylated at S329.

ADDITIONAL INFORMATION

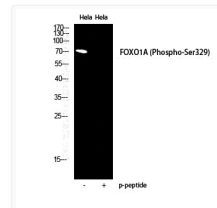
Note **STRICTLY FOR FURTHER SCIENTIFIC RESEARCH USE ONLY (RUO). MUST NOT TO BE USED IN DIAGNOSTIC OR THERAPEUTIC APPLICATIONS.**



Immunohistochemistry analysis of paraffin-embedded human breast carcinoma, using FOXO1A (Phospho-Ser329) Antibody. The picture on the right is blocked with the phospho peptide.



Western blot analysis of lysates from HeLa cells treated with Serum 20% 15', using FOXO1A (Phospho-Ser329) Antibody. The lane on the right is blocked with the phospho peptide.



Western blot analysis of HELA cells using Phospho-FoxO1A (S329) Polyclonal Antibody diluted at 1 : 2000