

Anti-Phospho-BCL2-Ser87 antibody (61-110 aa) (STJ90806)

GENERAL INFORMATION

Product Type	Primary antibodies
Applications	WB/IHC/IF/ELISA
Host / Source	Rabbit
Reactivity	Human/Mouse/Rat

PRODUCT PROPERTIES

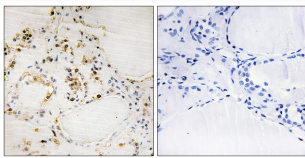
Clonality	Polyclonal
Concentration	1 mg/mL
Conjugation	Unconjugated
Purification	The antibody was affinity-purified from rabbit antiserum by affinity-chromatography using epitope-specific immunogen.
Dilution Range	WB 1:500-1:2000 IHC 1:100-1:300 ELISA 1:5000 IF 1:50-200
Formulation	Liquid in PBS containing 50% Glycerol, 0.5% BSA and 0.02% Sodium Azide.
Isotype	IgG
Molecular Weight	Observed: 28kD
Storage Instruction	Store at -20°C for up to 1 year from the date of receipt, and avoid repeat freeze-thaw cycles.

TARGET INFORMATION

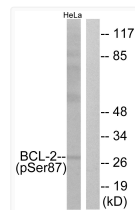
Gene ID	596
Gene Symbol	BCL2
UniProt ID	BCL2_HUMAN
Immunogen Region	61-110 aa
Specificity	Phospho-Bcl-2 (S87) Polyclonal Antibody detects endogenous levels of Bcl-2 protein only when phosphorylated at S87.

ADDITIONAL INFORMATION

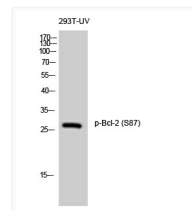
Note **STRICTLY FOR FURTHER SCIENTIFIC RESEARCH USE ONLY (RUO). MUST NOT TO BE USED IN DIAGNOSTIC OR THERAPEUTIC APPLICATIONS.**



Immunohistochemistry analysis of paraffin-embedded human thyroid gland, using BCL-2 (Phospho-Ser87) Antibody. The picture on the right is blocked with the phospho peptide.



Western blot analysis of lysates from HeLa cells treated with nocodazole 1ug/ml 18h, using BCL-2 (Phospho-Ser87) Antibody. The lane on the right is blocked with the phospho peptide.



Western blot analysis of 293T-UV cells using Phospho-Bcl-2 (S87) Polyclonal Antibody diluted at 1:500