

Anti-Phospho-ATP1A1-Ser16 antibody (5-54 aa) (STJ90804)

GENERAL INFORMATION

Product Type	Primary antibodies
Applications	WB/IHC/IF/ELISA
Host / Source	Rabbit
Reactivity	Human/Mouse/Rat

PRODUCT PROPERTIES

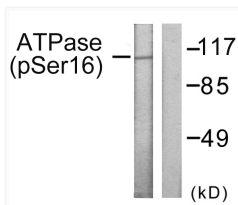
Clonality	Polyclonal
Concentration	1 mg/mL
Conjugation	Unconjugated
Purification	The antibody was affinity-purified from rabbit antiserum by affinity-chromatography using epitope-specific immunogen.
Dilution Range	WB 1:500-1:2000 IHC 1:100-1:300 ELISA 1:5000 IF 1:50-200
Formulation	Liquid in PBS containing 50% Glycerol, 0.5% BSA and 0.02% Sodium Azide.
Isotype	IgG
Molecular Weight	Observed: 112kD
Storage Instruction	Store at -20°C for up to 1 year from the date of receipt, and avoid repeat freeze-thaw cycles.

TARGET INFORMATION

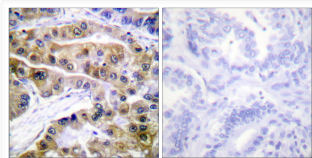
Gene ID	476
Gene Symbol	ATP1A1
UniProt ID	AT1A1_HUMAN
Immunogen Region	5-54 aa
Specificity	Phospho-Na+/K+-ATPase Alpha 1 (S16) Polyclonal Antibody detects endogenous levels of Na+/K+-ATPase Alpha 1 protein only when phosphorylated at S16.

ADDITIONAL INFORMATION

Note **STRICTLY FOR FURTHER SCIENTIFIC RESEARCH USE ONLY (RUO). MUST NOT TO BE USED IN DIAGNOSTIC OR THERAPEUTIC APPLICATIONS.**



Western blot analysis of lysates from 293 cells treated with PMA 125ng/ml 30', using ATPase (Phospho-Ser16) Antibody. The lane on the right is blocked with the phospho peptide.



Immunohistochemistry analysis of paraffin-embedded human lung carcinoma, using ATPase (Phospho-Ser16) Antibody. The picture on the right is blocked with the phospho peptide.