

Anti-Phospho-STAT2-Tyr690 antibody (656-705 aa) (STJ90772)

GENERAL INFORMATION

Product Type	Primary antibodies
Applications	WB/IHC/IF/ELISA
Host / Source	Rabbit
Reactivity	Human/Rat

PRODUCT PROPERTIES

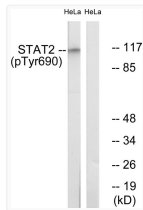
Clonality	Polyclonal
Concentration	1 mg/mL
Conjugation	Unconjugated
Purification	The antibody was affinity-purified from rabbit antiserum by affinity-chromatography using epitope-specific immunogen.
Dilution Range	WB 1:500-1:2000 IHC 1:100-1:300 ELISA 1:20000 IF 1:50-200
Formulation	Liquid in PBS containing 50% Glycerol, 0.5% BSA and 0.02% Sodium Azide.
Isotype	IgG
Molecular Weight	Observed: 113kD
Storage Instruction	Store at -20°C for up to 1 year from the date of receipt, and avoid repeat freeze-thaw cycles.

TARGET INFORMATION

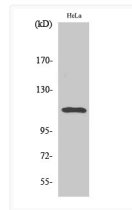
Gene ID	6773
Gene Symbol	STAT2
UniProt ID	STAT2_HUMAN
Immunogen Region	656-705 aa
Specificity	Phospho-Stat2 (Y690) Polyclonal Antibody detects endogenous levels of Stat2 protein only when phosphorylated at Y690.

ADDITIONAL INFORMATION

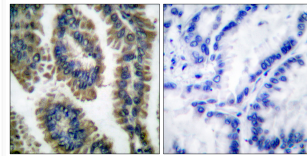
Note **STRICTLY FOR FURTHER SCIENTIFIC RESEARCH USE ONLY (RUO). MUST NOT TO BE USED IN DIAGNOSTIC OR THERAPEUTIC APPLICATIONS.**



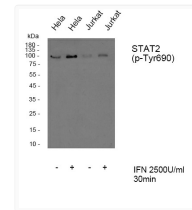
Western blot analysis of lysates from HeLa cells treated with IFN 2500U/ml 30', using STAT2 (Phospho-Tyr690) Antibody. The lane on the right is blocked with the phospho peptide.



Western blot analysis of various cells using Phospho-Stat2 (Y690) Polyclonal Antibody



Immunohistochemistry analysis of paraffin-embedded human lung carcinoma, using STAT2 (Phospho-Tyr690) Antibody. The picture on the right is blocked with the phospho peptide.



Western blot analysis of Stat2 (phospho Tyr690) Polyclonal Antibody, using HeLa, Jurkat cell treated or untreated with IFN 2500U/ml 30', 4°C over night, secondary antibody (cat: (NA was diluted at 1:10000, 37°C 1hour.