

Anti-Phospho-NFKB1-Ser337 antibody (STJ90754)

GENERAL INFORMATION

Product Type	Primary antibodies
Applications	WB/IHC/IF/ELISA
Host / Source	Rabbit
Reactivity	Human/Mouse

PRODUCT PROPERTIES

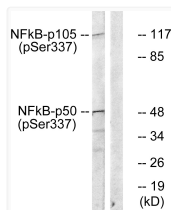
Clonality	Polyclonal
Concentration	1 mg/mL
Conjugation	Unconjugated
Purification	The antibody was affinity-purified from rabbit antiserum by affinity-chromatography using epitope-specific immunogen.
Dilution Range	WB 1:500-1:2000 IHC 1:100-1:300 ELISA 1:40000 IF 1:50-200
Formulation	Liquid in PBS containing 50% Glycerol, 0.5% BSA and 0.02% Sodium Azide.
Isotype	IgG
Molecular Weight	Observed: 105kD, 50kD
Storage Instruction	Store at -20°C for up to 1 year from the date of receipt, and avoid repeat freeze-thaw cycles.

TARGET INFORMATION

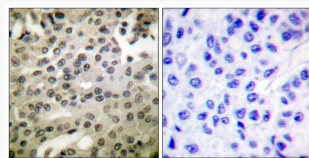
Gene ID	4790
Gene Symbol	NFKB1
UniProt ID	NFKB1_HUMAN
Specificity	Phospho-NF Kappa B-p105/p50 (S337) Polyclonal Antibody detects endogenous levels of NF Kappa B-p105/p50 protein only when phosphorylated at S337.

ADDITIONAL INFORMATION

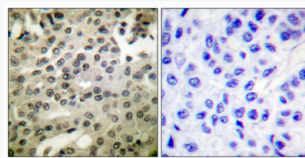
Note **STRICTLY FOR FURTHER SCIENTIFIC RESEARCH USE ONLY (RUO). MUST NOT TO BE USED IN DIAGNOSTIC OR THERAPEUTIC APPLICATIONS.**



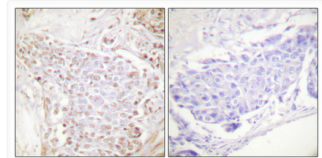
Western blot analysis of NF-Kappa B p105/p50 (Phospho-Ser337) Antibody. The lane on the right is blocked with the NF-Kappa B p105/p50 (Phospho-Ser337) peptide.



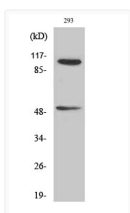
Immunohistochemistry analysis of paraffin-embedded human breast cancer, using NF-Kappa B p105/p50 (Phospho-Ser337) Antibody. The picture on the right is blocked with the NF-Kappa B p105/p50 (Phospho-Ser337) peptide.



Immunohistochemical analysis of paraffin-embedded Human breast cancer. Antibody was diluted at 1:100 (4°C overnight). High-pressure and temperature Tris-EDTA, pH8.0 was used for antigen retrieval. Negative control (right) obtained from antibody was pre-absorbed by immunogen peptide.



Immunohistochemical analysis of paraffin-embedded Human breast cancer. Antibody was diluted at 1:100 (4°C overnight). High-pressure and temperature Tris-EDTA, pH8.0 was used for antigen retrieval. Negative control (right) obtained from antibody was pre-absorbed by immunogen peptide.



Western blot analysis of various cells using Phospho-NF Kappa B-p105/p50 (S337) Polyclonal Antibody diluted at 1:500