

Anti-Phospho-Synaptotagmin 1/2-Thr202/199 antibody (176-225 aa) (STJ90747)

GENERAL INFORMATION

Product Type	Primary antibodies
Applications	WB/IHC/IF/ELISA
Host / Source	Rabbit
Reactivity	Human/Mouse/Rat

PRODUCT PROPERTIES

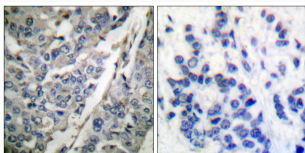
Clonality	Polyclonal
Concentration	1 mg/mL
Conjugation	Unconjugated
Purification	The antibody was affinity-purified from rabbit antiserum by affinity-chromatography using epitope-specific immunogen.
Dilution Range	WB 1:500-1:2000 IHC 1:100-1:300 ELISA 1:40000 IF 1:50-200
Formulation	Liquid in PBS containing 50% Glycerol, 0.5% BSA and 0.02% Sodium Azide.
Isotype	IgG
Molecular Weight	Observed: 60kD
Storage Instruction	Store at -20°C for up to 1 year from the date of receipt, and avoid repeat freeze-thaw cycles.

TARGET INFORMATION

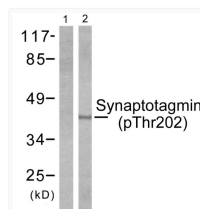
Gene ID	6857 127833
Gene Symbol	SYT1 SYT2
UniProt ID	SYT1_HUMAN SYT2_HUMAN
Immunogen Region	176-225 aa
Specificity	Phospho-Synaptotagmin 1/2 (T202/199) Polyclonal Antibody detects endogenous levels of Synaptotagmin 1/2 protein only when phosphorylated at T202/199.

ADDITIONAL INFORMATION

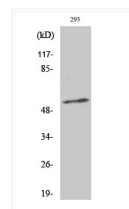
Note STRICTLY FOR FURTHER SCIENTIFIC RESEARCH USE ONLY (RUO). MUST NOT TO BE USED IN DIAGNOSTIC OR THERAPEUTIC APPLICATIONS.



Immunohistochemistry analysis of paraffin-embedded human breast carcinoma, using Synaptotagmin (Phospho-Thr202) Antibody. The picture on the right is blocked with the phospho peptide.



Western blot analysis of lysates from 293 cells treated with Forskolin 40nM 30', using Synaptotagmin (Phospho-Thr202) Antibody. The lane on the left is blocked with the phospho peptide.



Western blot analysis of various cells using Phospho-Synaptotagmin 1/2 (T202/199) Polyclonal Antibody