

Anti-Phospho-SMAD3-Ser425 antibody (376-425 aa) (STJ90745)

GENERAL INFORMATION

Product Type	Primary antibodies
Applications	IF/WB/IHC/ELISA
Host / Source	Rabbit
Reactivity	Human/Mouse/Rat

PRODUCT PROPERTIES

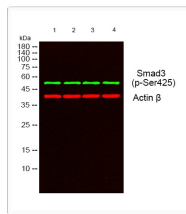
Clonality	Polyclonal
Concentration	1 mg/mL
Conjugation	Unconjugated
Purification	The antibody was affinity-purified from rabbit antiserum by affinity-chromatography using epitope-specific immunogen.
Dilution Range	IF 1:50-200 WB 1:500-1:2000 IHC 1:100-1:300 ELISA 1:40000
Formulation	Liquid in PBS containing 50% Glycerol, 0.5% BSA and 0.02% Sodium Azide.
Isotype	IgG
Molecular Weight	Observed: 58kD
Storage Instruction	Store at -20°C for up to 1 year from the date of receipt, and avoid repeat freeze-thaw cycles.

TARGET INFORMATION

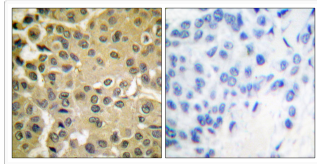
Gene ID	4088
Gene Symbol	SMAD3
UniProt ID	SMAD3_HUMAN
Immunogen Region	376-425 aa
Specificity	Phospho-Smad3 (S425) Polyclonal Antibody detects endogenous levels of Smad3 protein only when phosphorylated at S425.

ADDITIONAL INFORMATION

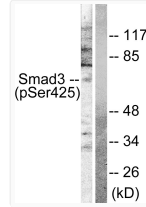
Note	STRICTLY FOR FURTHER SCIENTIFIC RESEARCH USE ONLY (RUO). MUST NOT TO BE USED IN DIAGNOSTIC OR THERAPEUTIC APPLICATIONS.
------	---



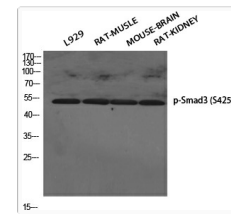
Western blot analysis of lysates from 1) L929, 2) RAT MUSCLE, 3) MOUSE-BRAIN, 4) RAT-KIDNEY cells. (Green) primary antibody was diluted at 1:1000, 4°C over night, secondary antibody (cat: (NA) was diluted at 1:10000, 37°C 1hour. (Red) Actin Beta monoclonal antibody (5B7) (cat: (STJ96930) antibody was diluted at 1:5000 as loading control, 4°C over night, secondary antibody (cat: (NA) was diluted at 1:10000, 37°C 1hour.



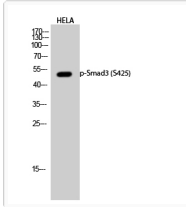
Immunohistochemistry analysis of paraffin-embedded human breast carcinoma, using Smad3 (Phospho-Ser425) Antibody. The picture on the right is blocked with the phospho peptide.



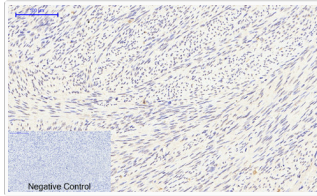
Western blot analysis of lysates from NIH/3T3 cells treated with IGF-1 100ng/ml 10', using Smad3 (Phospho-Ser425) Antibody. The lane on the right is blocked with the phospho peptide.



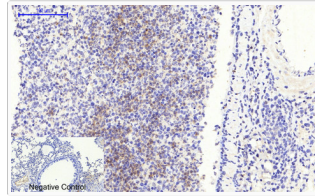
Western blot analysis of various cells using Phospho-Smad3 (S425) Polyclonal Antibody diluted at 1: 500



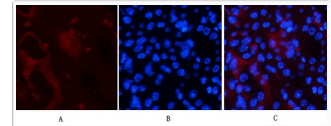
Western blot analysis of HELA cells using Phospho-Smad3 (S425) Polyclonal Antibody diluted at 1: 500



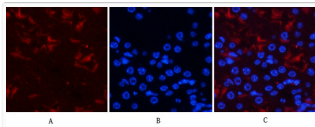
Immunohistochemical analysis of paraffin-embedded Human-uterus tissue. 1, Smad3 (phospho Ser425) Polyclonal Antibody was diluted at 1:200 (4°C, overnight). 2, Sodium citrate pH 6.0 was used for antibody retrieval (>98°C, 20min). 3, Secondary antibody was diluted at 1:200 (room temperature, 30min). Negative control was used by secondary antibody only.



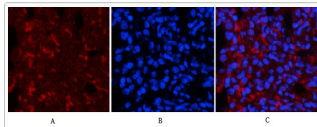
Immunohistochemical analysis of paraffin-embedded Mouse-lung tissue. 1, Smad3 (phospho Ser425) Polyclonal Antibody was diluted at 1:200 (4°C, overnight). 2, Sodium citrate pH 6.0 was used for antibody retrieval (>98°C, 20min). 3, Secondary antibody was diluted at 1:200 (room temperature, 30min). Negative control was used by secondary antibody only.



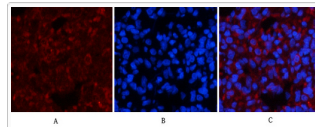
Immunofluorescence analysis of mouse-kidney tissue. 1, Smad3 (phospho Ser425) Polyclonal Antibody (red) was diluted at 1:200 (4°C, overnight). 2, Cy3 labeled Secondary antibody was diluted at 1:300 (room temperature, 50min). 3, Picture B: DAPI (blue) 10min. Picture A: Target. Picture C: merge of A+B



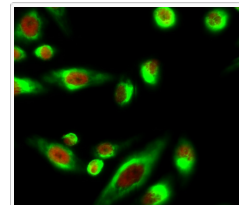
Immunofluorescence analysis of mouse-kidney tissue. 1, Smad3 (phospho Ser425) Polyclonal Antibody (red) was diluted at 1:200 (4°C, overnight). 2, Cy3 labeled Secondary antibody was diluted at 1:300 (room temperature, 50min). 3, Picture B: DAPI (blue) 10min. Picture A: Target. Picture B: DAPI. Picture C: merge of A+B



Immunofluorescence analysis of rat-lung tissue. 1, Smad3 (phospho Ser425) Polyclonal Antibody (red) was diluted at 1:200 (4°C, overnight). 2, Cy3 labeled Secondary antibody was diluted at 1:300 (room temperature, 50min). 3, Picture B: DAPI (blue) 10min. Picture A: Target. Picture B: DAPI. Picture C: merge of A+B



Immunofluorescence analysis of rat-lung tissue. 1, Smad3 (phospho Ser425) Polyclonal Antibody (red) was diluted at 1:200 (4°C, overnight). 2, Cy3 labeled Secondary antibody was diluted at 1:300 (room temperature, 50min). 3, Picture B: DAPI (blue) 10min. Picture A: Target. Picture B: DAPI. Picture C: merge of A+B



Immunofluorescence analysis of HELA cell. 1, Smad3 (phospho Ser425) Polyclonal Antibody (red) was diluted at 1:200 (4°C overnight). ATG5 mouse monoclonal antibody (3C7) (green) was diluted at 1:200 (4°C overnight). 2, Goat Anti Rabbit Alexa Fluor 594 Catalog: (NA) was diluted at 1:1000 (room temperature, 50min). Goat Anti Mouse Alexa Fluor 488 Catalog: (NA) was diluted at 1:1000 (room temperature, 50min).