

Anti-Phospho-IRS1-Ser312 antibody (279-328 aa) (STJ90731)

GENERAL INFORMATION

Product Type	Primary antibodies
Applications	WB/IHC
Host / Source	Rabbit
Reactivity	Human/Mouse/Rat

PRODUCT PROPERTIES

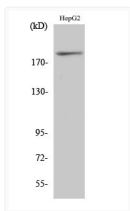
Clonality	Polyclonal
Concentration	1 mg/mL
Conjugation	Unconjugated
Purification	The antibody was affinity-purified from rabbit antiserum by affinity-chromatography using epitope-specific immunogen.
Dilution Range	WB 1:500-2000 IHC-P 1:50-300
Formulation	Liquid in PBS containing 50% Glycerol, 0.5% BSA and 0.02% Sodium Azide.
Isotype	IgG
Molecular Weight	Observed: 170kD
Storage Instruction	Store at -20°C for up to 1 year from the date of receipt, and avoid repeat freeze-thaw cycles.

TARGET INFORMATION

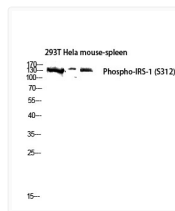
Gene ID	3667
Gene Symbol	IRS1
UniProt ID	IRS1_HUMAN
Immunogen Region	279-328 aa
Specificity	Phospho-IRS-1 (S312) Polyclonal Antibody detects endogenous levels of IRS-1 protein only when phosphorylated at S312.

ADDITIONAL INFORMATION

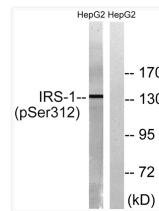
Note STRICTLY FOR FURTHER SCIENTIFIC RESEARCH USE ONLY (RUO). MUST NOT TO BE USED IN DIAGNOSTIC OR THERAPEUTIC APPLICATIONS.



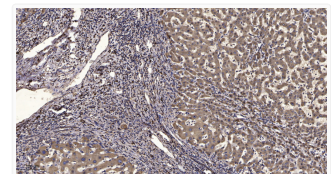
Western blot analysis of various cells using Phospho-IRS-1 (S312) polyclonal antibody diluted at 1:1000 STJ90731



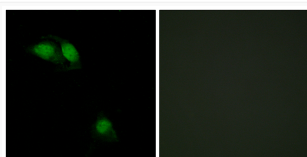
Western blot analysis of 293T HeLa mouse spleen lysate using Phospho-IRS-1 (S312) antibody. Antibody was diluted at STJ90731



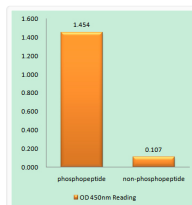
Western blot analysis of lysates from HepG2 cells, using IRS-1 (Phospho-Ser312) Antibody. The lane on the right was STJ90731



Immunohistochemical analysis of paraffin-embedded human liver cancer. 1. Antibody was diluted at 1:200 (4°C overnight). STJ90731



Immunofluorescence analysis of HeLa cells using IRS-1 (Phospho-Ser312) Antibody. The picture on the right is blocked STJ90731



Enzyme-Linked Immunosorbent Assay (Phospho-ELISA) for Immunogen Phosphopeptide (Phospho-left) and Non-Phosphopeptide (Phospho-right) STJ90731