

Anti-Phospho-Na⁺/K⁺-ATPase Alpha 1-Ser23 antibody (15-64 aa) (STJ90723)

GENERAL INFORMATION

Product Type	Primary antibodies
Applications	WB/IF/ELISA
Host / Source	Rabbit
Reactivity	Rat

PRODUCT PROPERTIES

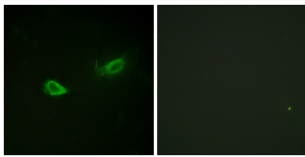
Clonality	Polyclonal
Concentration	1 mg/mL
Conjugation	Unconjugated
Purification	The antibody was affinity-purified from rabbit antiserum by affinity-chromatography using epitope-specific immunogen.
Dilution Range	WB 1:500-1:2000 IF 1:100-1:300 ELISA 1:5000
Formulation	Liquid in PBS containing 50% Glycerol, 0.5% BSA and 0.02% Sodium Azide.
Isotype	IgG
Molecular Weight	Observed: 113kD
Storage Instruction	Store at -20°C for up to 1 year from the date of receipt, and avoid repeat freeze-thaw cycles.

TARGET INFORMATION

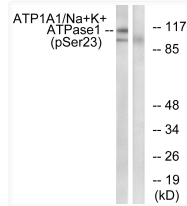
Immunogen Region	15-64 aa
Specificity	Phospho-Na ⁺ /K ⁺ -ATPase Alpha 1 (S23) Polyclonal Antibody detects endogenous levels of Na ⁺ /K ⁺ -ATPase Alpha 1 protein only when phosphorylated at S23.

ADDITIONAL INFORMATION

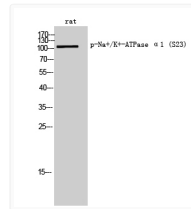
Note STRICTLY FOR FURTHER SCIENTIFIC RESEARCH USE ONLY (RUO). MUST NOT TO BE USED IN DIAGNOSTIC OR THERAPEUTIC APPLICATIONS.



Immunofluorescence analysis of NIH/3T3 cells, using ATP1 alpha1/Na⁺/K⁺ ATPase1 (Phospho-Ser23) Antibody. The picture on the right is blocked with the phospho peptide.



Western blot analysis of lysates from rat brain, using ATP1 alpha1/Na⁺/K⁺ ATPase1 (Phospho-Ser23) Antibody. The lane on the right is blocked with the phospho peptide.



Western blot analysis of rat cells using Phospho-Na⁺/K⁺-ATPase Alpha 1 (S23) Polyclonal Antibody