

Anti-Phospho-MAPK8IP1-Thr103 antibody (69-118 aa) (STJ90715)

GENERAL INFORMATION

Product Type	Primary antibodies
Applications	WB/IHC/IF/ELISA
Host / Source	Rabbit
Reactivity	Human/Mouse/Rat

PRODUCT PROPERTIES

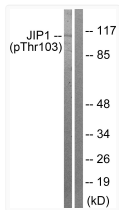
Clonality	Polyclonal
Concentration	1 mg/mL
Conjugation	Unconjugated
Purification	The antibody was affinity-purified from rabbit antiserum by affinity-chromatography using epitope-specific immunogen.
Dilution Range	WB 1:500-1:2000 IHC 1:100-1:300 IF 1:200-1:1000 ELISA 1:5000
Formulation	Liquid in PBS containing 50% Glycerol, 0.5% BSA and 0.02% Sodium Azide.
Isotype	IgG
Molecular Weight	Observed: 113kD
Storage Instruction	Store at -20°C for up to 1 year from the date of receipt, and avoid repeat freeze-thaw cycles.

TARGET INFORMATION

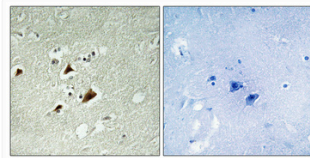
Gene ID	9479
Gene Symbol	MAPK8IP1
UniProt ID	JIP1_HUMAN
Immunogen Region	69-118 aa
Specificity	Phospho-JIP-1 (T103) Polyclonal Antibody detects endogenous levels of JIP-1 protein only when phosphorylated at T103.

ADDITIONAL INFORMATION

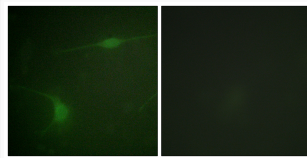
Note **STRICTLY FOR FURTHER SCIENTIFIC RESEARCH USE ONLY (RUO). MUST NOT TO BE USED IN DIAGNOSTIC OR THERAPEUTIC APPLICATIONS.**



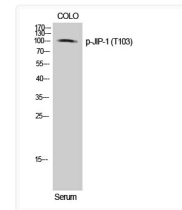
Western blot analysis of lysates from COLO205 cells treated with Serum 20% 15', using JIP1 (Phospho-Thr103) Antibody. The lane on the right is blocked with the phospho peptide.



Immunohistochemical analysis of paraffin-embedded Human brain. Antibody was diluted at 1:100 (4°C overnight). High-pressure and temperature Tris-EDTA, pH8.0 was used for antigen retrieval. Negative control (right) obtained from antibody was pre-absorbed by immunogen peptide.



Immunofluorescence analysis of NIH/3T3 cells, using JIP1 (Phospho-Thr103) Antibody. The picture on the right is blocked with the phospho peptide.



Western blot analysis of COLO cells using Phospho-JIP-1 (T103) Polyclonal Antibody