

Anti-Phospho-ESR2-Ser105 antibody (71-120 aa) (STJ90713)

GENERAL INFORMATION

Product Type	Primary antibodies
Applications	WB/IF/ELISA
Host / Source	Rabbit
Reactivity	Human/Mouse/Rat

PRODUCT PROPERTIES

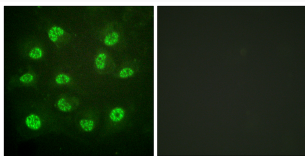
Clonality	Polyclonal
Concentration	1 mg/mL
Conjugation	Unconjugated
Purification	The antibody was affinity-purified from rabbit antiserum by affinity-chromatography using epitope-specific immunogen.
Dilution Range	WB 1:500-1:2000 IF 1:200-1:1000 ELISA 1:5000
Formulation	Liquid in PBS containing 50% Glycerol, 0.5% BSA and 0.02% Sodium Azide.
Isotype	IgG
Molecular Weight	Observed: 59kD
Storage Instruction	Store at -20°C for up to 1 year from the date of receipt, and avoid repeat freeze-thaw cycles.

TARGET INFORMATION

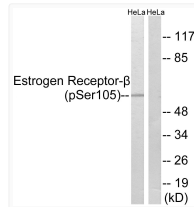
Gene ID	2100
Gene Symbol	ESR2
UniProt ID	ESR2_HUMAN
Immunogen Region	71-120 aa
Specificity	Phospho-ER Beta (S105) Polyclonal Antibody detects endogenous levels of ER Beta protein only when phosphorylated at S105.

ADDITIONAL INFORMATION

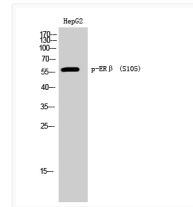
Note **STRICTLY FOR FURTHER SCIENTIFIC RESEARCH USE ONLY (RUO). MUST NOT TO BE USED IN DIAGNOSTIC OR THERAPEUTIC APPLICATIONS.**



Immunofluorescence analysis of HUVEC cells, using Estrogen Receptor-beta (Phospho-Ser105) Antibody. The picture on the right is blocked with the phospho peptide.



Western blot analysis of lysates from HeLa cells, using Estrogen Receptor-beta (Phospho-Ser105) Antibody. The lane on the right is blocked with the phospho peptide.



Western blot analysis of HepG2 cells using Phospho-ER Beta (S105) Polyclonal Antibody