

Anti-Phospho-EphB1/2-Tyr594/604 antibody (561-610 aa) (STJ90711)

GENERAL INFORMATION

Product Type	Primary antibodies
Applications	WB/IF/ELISA
Host / Source	Rabbit
Reactivity	Human/Mouse/Rat

PRODUCT PROPERTIES

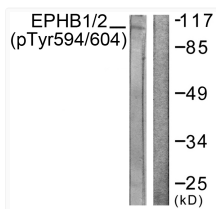
Clonality	Polyclonal
Concentration	1 mg/mL
Conjugation	Unconjugated
Purification	The antibody was affinity-purified from rabbit antiserum by affinity-chromatography using epitope-specific immunogen.
Dilution Range	WB 1:500-1:2000 IF 1:200-1:1000 ELISA 1:5000
Formulation	Liquid in PBS containing 50% Glycerol, 0.5% BSA and 0.02% Sodium Azide.
Isotype	IgG
Molecular Weight	Observed: 110kD
Storage Instruction	Store at -20°C for up to 1 year from the date of receipt, and avoid repeat freeze-thaw cycles.

TARGET INFORMATION

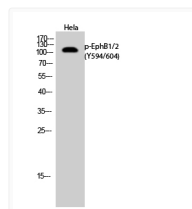
Gene ID	2048 2047
Gene Symbol	EPHB2 EPHB1
UniProt ID	EPHB2_HUMAN EPHB1_HUMAN
Immunogen Region	561-610 aa
Specificity	Phospho-EphB1/2 (Y594/604) Polyclonal Antibody detects endogenous levels of EphB1/2 protein only when phosphorylated at Y594/604.

ADDITIONAL INFORMATION

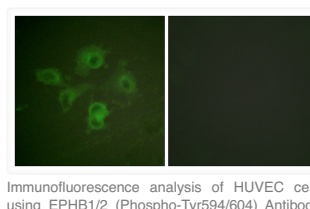
Note **STRICTLY FOR FURTHER SCIENTIFIC RESEARCH USE ONLY (RUO). MUST NOT TO BE USED IN DIAGNOSTIC OR THERAPEUTIC APPLICATIONS.**



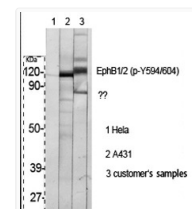
Western blot analysis of lysates from HepG2 cells, using EPHB1/2 (Phospho-Tyr594/604) Antibody. The lane on the right is blocked with the phospho peptide.



Western blot analysis of HeLa cells using Phospho-EphB1/2 (Y594/604) Polyclonal Antibody



Immunofluorescence analysis of HUVEC cells, using EPHB1/2 (Phospho-Tyr594/604) Antibody. The picture on the right is blocked with the phospho-peptide.



Western blot analysis of various cells using Phospho-EphB1/2 (Y594/604) Polyclonal Antibody