

Anti-Phospho-DAPP1-Tyr139 antibody (105-154 aa) (STJ90709)

GENERAL INFORMATION

Product Type	Primary antibodies
Applications	WB/IHC/IF/ELISA
Host / Source	Rabbit
Reactivity	Human/Mouse

PRODUCT PROPERTIES

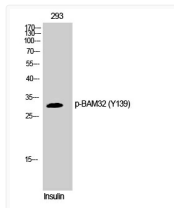
Clonality	Polyclonal
Concentration	1 mg/mL
Conjugation	Unconjugated
Purification	The antibody was affinity-purified from rabbit antiserum by affinity-chromatography using epitope-specific immunogen.
Dilution Range	WB 1:500-1:2000 IHC 1:100-1:300 IF 1:200-1:1000 ELISA 1:5000
Formulation	Liquid in PBS containing 50% Glycerol, 0.5% BSA and 0.02% Sodium Azide.
Isotype	IgG
Molecular Weight	Observed: 32kD
Storage Instruction	Store at -20°C for up to 1 year from the date of receipt, and avoid repeat freeze-thaw cycles.

TARGET INFORMATION

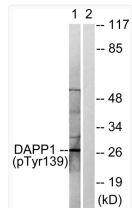
Gene ID	27071
Gene Symbol	DAPP1
UniProt ID	DAPP1_HUMAN
Immunogen Region	105-154 aa
Specificity	Phospho-BAM32 (Y139) Polyclonal Antibody detects endogenous levels of BAM32 protein only when phosphorylated at Y139.

ADDITIONAL INFORMATION

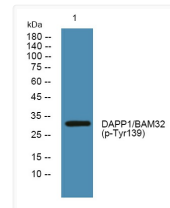
Note **STRICTLY FOR FURTHER SCIENTIFIC RESEARCH USE ONLY (RUO). MUST NOT TO BE USED IN DIAGNOSTIC OR THERAPEUTIC APPLICATIONS.**



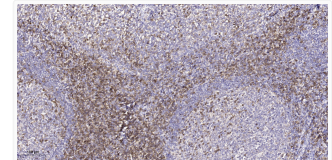
Western blot analysis of 293 cells using Phospho-BAM32 (Y139) Polyclonal Antibody STJ90709



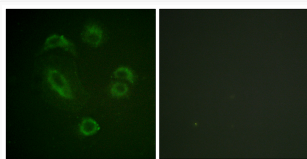
Western blot analysis of lysates from 293 cells treated with insulin 0.01 U/ml for 2', using DAPP1 (Phospho-Tyr139) STJ90709



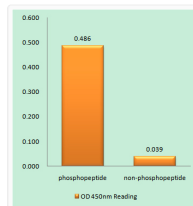
Western blot analysis of lysates from U2OS cells, primary antibody was diluted at 1:1000, 4°C overnight STJ90709



Immunohistochemical analysis of paraffin-embedded human tonsil. 1, Tris-EDTA, pH 9.0 was used for antigen retrieval. 2, STJ90709



Immunofluorescence analysis of A549 cells using DAPP1 (Phospho-Tyr139) Antibody. The picture on the right is blocked STJ90709



Enzyme-Linked Immunosorbent Assay (Phospho-ELISA) for Immunogen Phosphopeptide (Phospho-left) and Non-Phosphopeptide (Phospho-right) STJ90709