

Anti-Phospho-CHEK1-Ser301 antibody (271-320 aa) (STJ90706)

GENERAL INFORMATION

Product Type	Primary antibodies
Applications	WB/IF/ELISA
Host / Source	Rabbit
Reactivity	Human/Mouse/Rat

PRODUCT PROPERTIES

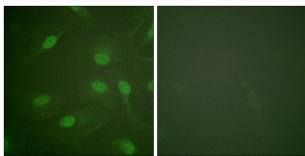
Clonality	Polyclonal
Concentration	1 mg/mL
Conjugation	Unconjugated
Purification	The antibody was affinity-purified from rabbit antiserum by affinity-chromatography using epitope-specific immunogen.
Dilution Range	WB 1:500-1:2000 IF 1:200-1:1000 ELISA 1:40000
Formulation	Liquid in PBS containing 50% Glycerol, 0.5% BSA and 0.02% Sodium Azide.
Isotype	IgG
Molecular Weight	Observed: 55kD
Storage Instruction	Store at -20°C for up to 1 year from the date of receipt, and avoid repeat freeze-thaw cycles.

TARGET INFORMATION

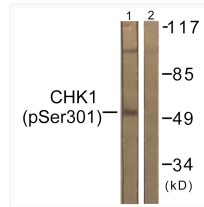
Gene ID	1111
Gene Symbol	CHEK1
UniProt ID	CHK1_HUMAN
Immunogen Region	271-320 aa
Specificity	Phospho-Chk1 (S301) Polyclonal Antibody detects endogenous levels of Chk1 protein only when phosphorylated at S301.

ADDITIONAL INFORMATION

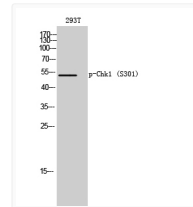
Note STRICTLY FOR FURTHER SCIENTIFIC RESEARCH USE ONLY (RUO). MUST NOT TO BE USED IN DIAGNOSTIC OR THERAPEUTIC APPLICATIONS.



Immunofluorescence analysis of HeLa cells, using Chk1 (Phospho-Ser301) Antibody. The picture on the right is blocked with the phospho peptide.



Western blot analysis of lysates from 293 cells, using Chk1 (Phospho-Ser301) Antibody. The lane on the right is blocked with the phospho peptide.



Western blot analysis of 293T cells using Phospho-Chk1 (S301) Polyclonal Antibody diluted at 1: 2000