

## Anti-Phospho-RPS6KA5-Thr581 antibody (551-600 aa) (STJ90695)

### GENERAL INFORMATION

Product Type	Primary antibodies
Applications	WB/IHC/IF/ELISA
Host / Source	Rabbit
Reactivity	Human/Mouse

### PRODUCT PROPERTIES

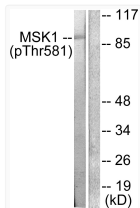
Clonality	Polyclonal
Concentration	1 mg/mL
Conjugation	Unconjugated
Purification	The antibody was affinity-purified from rabbit antiserum by affinity-chromatography using epitope-specific immunogen.
Dilution Range	WB 1:500-1:2000 IHC 1:100-1:300 IF 1:200-1:1000 ELISA 1:40000
Formulation	Liquid in PBS containing 50% Glycerol, 0.5% BSA and 0.02% Sodium Azide.
Isotype	IgG
Molecular Weight	Observed: 90kD
Storage Instruction	Store at -20°C for up to 1 year from the date of receipt, and avoid repeat freeze-thaw cycles.

### TARGET INFORMATION

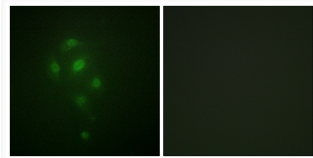
Gene ID	<a href="#">9252</a>
Gene Symbol	<a href="#">RPS6KA5</a>
UniProt ID	<a href="#">KS6A5_HUMAN</a>
Immunogen Region	551-600 aa
Specificity	Phospho-MSK1 (T581) Polyclonal Antibody detects endogenous levels of MSK1 protein only when phosphorylated at T581.

### ADDITIONAL INFORMATION

Note **STRICTLY FOR FURTHER SCIENTIFIC RESEARCH USE ONLY (RUO). MUST NOT TO BE USED IN DIAGNOSTIC OR THERAPEUTIC APPLICATIONS.**



Western blot analysis of lysates from RAW264.7 cells treated with UV 5', using MSK1 (Phospho-Thr581) Antibody. The lane on the right is blocked with the phospho peptide.



Immunofluorescence analysis of A549 cells, using MSK1 (Phospho-Thr581) Antibody. The picture on the right is blocked with the phospho peptide.