

## Anti-Phospho-TEK-Tyr1108 antibody (1074-1123 aa) (STJ90693)

### GENERAL INFORMATION

Product Type	Primary antibodies
Applications	WB/ELISA/IHC
Host / Source	Rabbit
Reactivity	Human/Mouse

### PRODUCT PROPERTIES

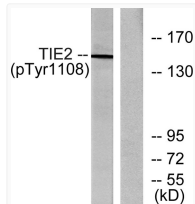
Clonality	Polyclonal
Concentration	1 mg/mL
Conjugation	Unconjugated
Purification	The antibody was affinity-purified from rabbit antiserum by affinity-chromatography using epitope-specific immunogen.
Dilution Range	WB 1:500-2000 IHC-P 1:50-300 ELISA 2000-20000
Formulation	Liquid in PBS containing 50% Glycerol, 0.5% BSA and 0.02% Sodium Azide.
Isotype	IgG
Molecular Weight	Observed: 150kD
Storage Instruction	Store at -20°C for up to 1 year from the date of receipt, and avoid repeat freeze-thaw cycles.

### TARGET INFORMATION

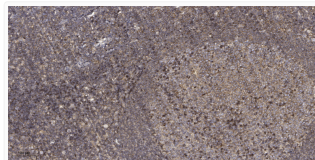
Gene ID	<a href="#">7010</a>
Gene Symbol	<a href="#">TEK</a>
UniProt ID	<a href="#">TIE2_HUMAN</a>
Immunogen Region	1074-1123 aa
Specificity	Phospho-Tie-2 (Y1108) Polyclonal Antibody detects endogenous levels of Tie-2 protein only when phosphorylated at Y1108.

### ADDITIONAL INFORMATION

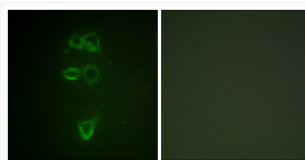
Note STRICTLY FOR FURTHER SCIENTIFIC RESEARCH USE ONLY (RUO). MUST NOT TO BE USED IN DIAGNOSTIC OR THERAPEUTIC APPLICATIONS.



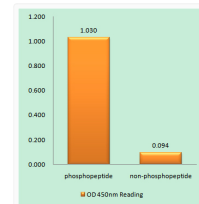
Western blot analysis of lysates from NIH/3T3 cells, using TIE2 (Phospho-Tyr1108) Antibody. The lane on the right is STJ90693



Immunohistochemical analysis of paraffin-embedded human tonsil. 1, Antibody was diluted at 1:200 (4°C overnight). 2, STJ90693



Immunofluorescence analysis of HepG2 cells using TIE2 (Phospho-Tyr1108) Antibody. The picture on the right is blocked STJ90693



Enzyme-Linked Immunosorbent Assay (Phospho-ELISA) for Immunogen Phosphopeptide (Phospho-left) and Non-Phosphopeptide (Non-Phosphopeptide) STJ90693