

## Anti-Phospho-FGFR1-Tyr654 antibody (626-675 aa) (STJ90688)

### GENERAL INFORMATION

Product Type	Primary antibodies
Applications	WB/IF/ELISA
Host / Source	Rabbit
Reactivity	Human/Mouse/Rat

### PRODUCT PROPERTIES

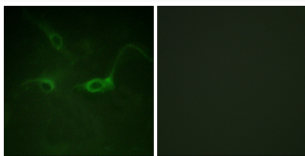
Clonality	Polyclonal
Concentration	1 mg/mL
Conjugation	Unconjugated
Purification	The antibody was affinity-purified from rabbit antiserum by affinity-chromatography using epitope-specific immunogen.
Dilution Range	WB 1:500-1:2000 IF 1:200-1:1000 ELISA 1:20000
Formulation	Liquid in PBS containing 50% Glycerol, 0.5% BSA and 0.02% Sodium Azide.
Isotype	IgG
Molecular Weight	Calculated: 120kD Observed: full length 120-140kD, FOP-FGFR1 90kD
Storage Instruction	Store at -20°C for up to 1 year from the date of receipt, and avoid repeat freeze-thaw cycles.

### TARGET INFORMATION

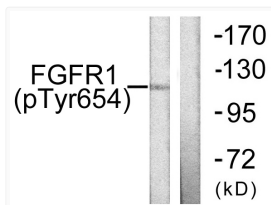
Gene ID	<a href="#">2260</a>
Gene Symbol	<a href="#">FGFR1</a>
UniProt ID	<a href="#">FGFR1_HUMAN</a>
Immunogen Region	626-675 aa
Specificity	Phospho-Fig (Y654) Polyclonal Antibody detects endogenous levels of Fig protein only when phosphorylated at Y654.

### ADDITIONAL INFORMATION

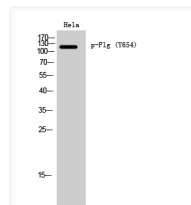
Note **STRICTLY FOR FURTHER SCIENTIFIC RESEARCH USE ONLY (RUO). MUST NOT TO BE USED IN DIAGNOSTIC OR THERAPEUTIC APPLICATIONS.**



Immunofluorescence analysis of COS7 cells, using FGFR1 (Phospho-Tyr654) Antibody. The picture on the right is blocked with the phospho peptide.



Western blot analysis of lysates from 293 cells treated with Insulin 0.01U/ml 15', using FGFR1 (Phospho-Tyr654) Antibody. The lane on the right is blocked with the phospho peptide.



Western blot analysis of HeLa cells using Phospho-Fig (Y654) Polyclonal Antibody diluted at 1:1000