

Anti-Phospho-RAF1-Ser338 antibody (305-354 aa) (STJ90676)

GENERAL INFORMATION

Product Type	Primary antibodies
Applications	WB/ELISA/IHC
Host / Source	Rabbit
Reactivity	Human/Mouse/Rat

PRODUCT PROPERTIES

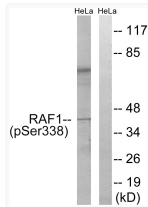
Clonality	Polyclonal
Concentration	1 mg/mL
Conjugation	Unconjugated
Purification	The antibody was affinity-purified from rabbit antiserum by affinity-chromatography using epitope-specific immunogen.
Dilution Range	WB 1:500-2000 IHC-P 1:50-300 ELISA 2000-20000
Formulation	Liquid in PBS containing 50% Glycerol, 0.5% BSA and 0.02% Sodium Azide.
Isotype	IgG
Molecular Weight	Observed: 70kD
Storage Instruction	Store at -20°C for up to 1 year from the date of receipt, and avoid repeat freeze-thaw cycles.

TARGET INFORMATION

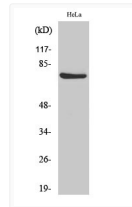
Gene ID	5894
Gene Symbol	RAF1
UniProt ID	RAF1_HUMAN
Immunogen Region	305-354 aa
Specificity	Phospho-Raf-1 (S338) Polyclonal Antibody detects endogenous levels of Raf-1 protein only when phosphorylated at S338.

ADDITIONAL INFORMATION

Note **STRICTLY FOR FURTHER SCIENTIFIC RESEARCH USE ONLY (RUO). MUST NOT TO BE USED IN DIAGNOSTIC OR THERAPEUTIC APPLICATIONS.**



Western blot analysis of lysates from HeLa cells treated with paclitaxel 1uM 24h, using C-RAF (Phospho-Ser338) Antibody. The lane on the right is blocked with the phospho peptide.



Western blot analysis of various cells using Phospho-Raf-1 (S338) Polyclonal Antibody