

Anti-Phospho-LMNA-Ser22 antibody (2-51 aa) (STJ90645)

GENERAL INFORMATION

Product Type	Primary antibodies
Applications	WB/IHC/IF/ELISA
Host / Source	Rabbit
Reactivity	Human/Mouse/Rat

PRODUCT PROPERTIES

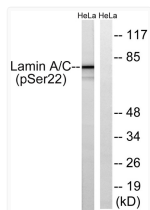
Clonality	Polyclonal
Concentration	1 mg/mL
Conjugation	Unconjugated
Purification	The antibody was affinity-purified from rabbit antiserum by affinity-chromatography using epitope-specific immunogen.
Dilution Range	WB 1:500-1:2000 IHC 1:100-1:300 ELISA 1:5000 IF 1:50-200
Formulation	Liquid in PBS containing 50% Glycerol, 0.5% BSA and 0.02% Sodium Azide.
Isotype	IgG
Molecular Weight	Observed: 74kD
Storage Instruction	Store at -20°C for up to 1 year from the date of receipt, and avoid repeat freeze-thaw cycles.

TARGET INFORMATION

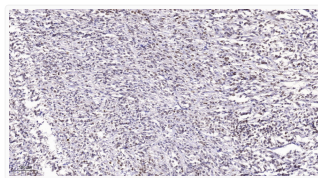
Gene ID	4000
Gene Symbol	LMNA
UniProt ID	LMNA_HUMAN
Immunogen Region	2-51 aa
Specificity	Phospho-Lamin A/C (S22) Polyclonal Antibody detects endogenous levels of Lamin A/C protein only when phosphorylated at S22.

ADDITIONAL INFORMATION

Note **STRICTLY FOR FURTHER SCIENTIFIC RESEARCH USE ONLY (RUO). MUST NOT TO BE USED IN DIAGNOSTIC OR THERAPEUTIC APPLICATIONS.**



Western blot analysis of lysates from HeLa cells treated with paclitaxel 1 μ M 24 h, using Lamin A (Phospho-Ser22) STJ90645



Immunohistochemical analysis of paraffin-embedded human small intestinal stromal tumor. 1, Tris-EDTA, pH 9.0 was used STJ90645