

Anti-Phospho-HCLS1-Tyr397 antibody (366-415 aa) (STJ90644)

GENERAL INFORMATION

Product Type	Primary antibodies
Applications	WB/IHC
Host / Source	Rabbit
Reactivity	Human/Rat/Mouse

PRODUCT PROPERTIES

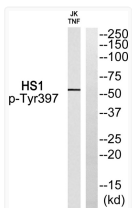
Clonality	Polyclonal
Concentration	1 mg/mL
Conjugation	Unconjugated
Purification	The antibody was affinity-purified from rabbit antiserum by affinity-chromatography using epitope-specific immunogen.
Dilution Range	WB 1:500-2000 IHC-P 1:50-300
Formulation	Liquid in PBS containing 50% Glycerol, 0.5% BSA and 0.02% Sodium Azide.
Isotype	IgG
Molecular Weight	Observed: 55kD
Storage Instruction	Store at -20°C for up to 1 year from the date of receipt, and avoid repeat freeze-thaw cycles.

TARGET INFORMATION

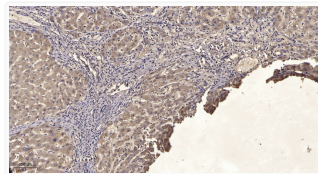
Gene ID	3059
Gene Symbol	HCLS1
UniProt ID	HCLS1_HUMAN
Immunogen Region	366-415 aa
Specificity	Phospho-Lck BP-1 (Y397) Polyclonal Antibody detects endogenous levels of Lck BP-1 protein only when phosphorylated at Y397.

ADDITIONAL INFORMATION

Note STRICTLY FOR FURTHER SCIENTIFIC RESEARCH USE ONLY (RUO). MUST NOT TO BE USED IN DIAGNOSTIC OR THERAPEUTIC APPLICATIONS.



Western blot analysis of HS1 (Phospho-Tyr397) Antibody. The lane on the right was blocked with the HS1 (Phospho-Tyr397) STJ90644



Immunohistochemical analysis of paraffin-embedded human liver cancer. 1. Antibody was diluted at 1:200 (4° overnight). STJ90644