

Anti-Phospho-ERBB3-Tyr1197 antibody (1163-1212 aa) (STJ90642)

GENERAL INFORMATION

Product Type	Primary antibodies
Applications	WB/ELISA
Host / Source	Rabbit
Reactivity	Human/Mouse/Rat

PRODUCT PROPERTIES

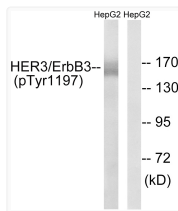
Clonality	Polyclonal
Concentration	1 mg/mL
Conjugation	Unconjugated
Purification	The antibody was affinity-purified from rabbit antiserum by affinity-chromatography using epitope-specific immunogen.
Dilution Range	WB 1:500-1:2000 ELISA 1:40000
Formulation	Liquid in PBS containing 50% Glycerol, 0.5% BSA and 0.02% Sodium Azide.
Isotype	IgG
Molecular Weight	Observed: 160-170kD
Storage Instruction	Store at -20°C for up to 1 year from the date of receipt, and avoid repeat freeze-thaw cycles.

TARGET INFORMATION

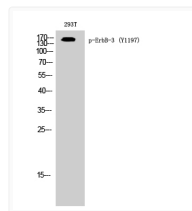
Gene ID	2065
Gene Symbol	ERBB3
UniProt ID	ERBB3_HUMAN
Immunogen Region	1163-1212 aa
Specificity	Phospho-ErbB-3 (Y1197) Polyclonal Antibody detects endogenous levels of ErbB-3 protein only when phosphorylated at Y1197.

ADDITIONAL INFORMATION

Note **STRICTLY FOR FURTHER SCIENTIFIC RESEARCH USE ONLY (RUO). MUST NOT TO BE USED IN DIAGNOSTIC OR THERAPEUTIC APPLICATIONS.**



Western blot analysis of lysates from HepG2 cells, using HER3 (Phospho-Tyr1197) Antibody. The lane on the right is blocked with the phospho-peptide.



Western blot analysis of 293T cells using Phospho-ErbB-3 (Y1197) Polyclonal Antibody diluted at 1: 500 cells nucleus extracted by Minute TM Cytoplasmic and Nuclear Fractionation kit (SC-003, Inventibiotech, MN, USA).