

Anti-Phospho-VCP-Ser352 antibody (318-367 aa) (STJ90640)

GENERAL INFORMATION

Product Type	Primary antibodies
Applications	WB/ELISA
Host / Source	Rabbit
Reactivity	Human/Mouse/Rat

PRODUCT PROPERTIES

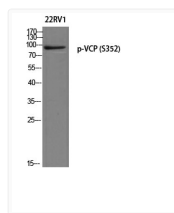
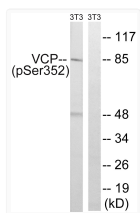
Clonality	Polyclonal
Concentration	1 mg/mL
Conjugation	Unconjugated
Purification	The antibody was affinity-purified from rabbit antiserum by affinity-chromatography using epitope-specific immunogen.
Dilution Range	WB 1:500-1:2000 ELISA 1:5000
Formulation	Liquid in PBS containing 50% Glycerol, 0.5% BSA and 0.02% Sodium Azide.
Isotype	IgG
Molecular Weight	Observed: 85kD
Storage Instruction	Store at -20°C for up to 1 year from the date of receipt, and avoid repeat freeze-thaw cycles.

TARGET INFORMATION

Gene ID	7415
Gene Symbol	VCP
UniProt ID	TEBA_HUMAN
Immunogen Region	318-367 aa
Specificity	Phospho-VCP (S352) Polyclonal Antibody detects endogenous levels of VCP protein only when phosphorylated at S352.

ADDITIONAL INFORMATION

Note STRICTLY FOR FURTHER SCIENTIFIC RESEARCH USE ONLY (RUO). MUST NOT TO BE USED IN DIAGNOSTIC OR THERAPEUTIC APPLICATIONS.



Western blot analysis of lysates from NIH/3T3 cells treated with starved 24h, using VCP (Phospho-Ser352) Antibody. The lane on the right is blocked with the phospho peptide.

Western blot analysis of 22RV1 cells using p-VCP (S352) antibody. Antibody was diluted at 1:1000.