

Anti-Phospho-CCND2-Thr280 antibody (240-289 aa) (STJ90627)

GENERAL INFORMATION

Product Type	Primary antibodies
Applications	WB/IHC/IF/ELISA
Host / Source	Rabbit
Reactivity	Human/Mouse/Rat

PRODUCT PROPERTIES

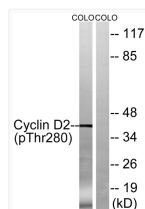
Clonality	Polyclonal
Concentration	1 mg/mL
Conjugation	Unconjugated
Purification	The antibody was affinity-purified from rabbit antiserum by affinity-chromatography using epitope-specific immunogen.
Dilution Range	WB 1:500-1:2000 IHC 1:100-1:300 ELISA 1:10000 IF 1:50-200
Formulation	Liquid in PBS containing 50% Glycerol, 0.5% BSA and 0.02% Sodium Azide.
Isotype	IgG
Molecular Weight	Observed: 40kD
Storage Instruction	Store at -20°C for up to 1 year from the date of receipt, and avoid repeat freeze-thaw cycles.

TARGET INFORMATION

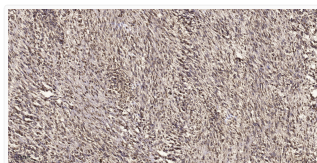
Gene ID	894
Gene Symbol	CCND2
UniProt ID	CCND2_HUMAN
Immunogen Region	240-289 aa
Specificity	Phospho-Cyclin D2 (T280) Polyclonal Antibody detects endogenous levels of Cyclin D2 protein only when phosphorylated at T280.

ADDITIONAL INFORMATION

Note **STRICTLY FOR FURTHER SCIENTIFIC RESEARCH USE ONLY (RUO). MUST NOT TO BE USED IN DIAGNOSTIC OR THERAPEUTIC APPLICATIONS.**



Western blot analysis of lysates from COLO205 cells treated with EGF 200 ng/ml for 30', using Cyclin D2 STJ90627



Immunohistochemical analysis of paraffin-embedded human small intestinal carcinoma tissue. 1, Primary antibody was STJ90627