

## Anti-Phospho-BCL6-Ser333 antibody (299-348 aa) (STJ90620)

### GENERAL INFORMATION

Product Type	Primary antibodies
Applications	WB/ELISA
Host / Source	Rabbit
Reactivity	Human/Mouse/Rat

### PRODUCT PROPERTIES

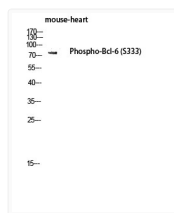
Clonality	Polyclonal
Concentration	1 mg/mL
Conjugation	Unconjugated
Purification	The antibody was affinity-purified from rabbit antiserum by affinity-chromatography using epitope-specific immunogen.
Dilution Range	WB 1:500-1:2000 ELISA 1:5000
Formulation	Liquid in PBS containing 50% Glycerol, 0.5% BSA and 0.02% Sodium Azide.
Isotype	IgG
Molecular Weight	Observed: 79kD
Storage Instruction	Store at -20°C for up to 1 year from the date of receipt, and avoid repeat freeze-thaw cycles.

### TARGET INFORMATION

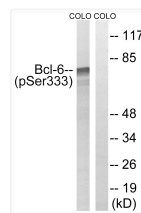
Gene ID	<a href="#">604</a>
Gene Symbol	<a href="#">BCL6</a>
UniProt ID	<a href="#">BCL6_HUMAN</a>
Immunogen Region	299-348 aa
Specificity	Phospho-Bcl-6 (S333) Polyclonal Antibody detects endogenous levels of Bcl-6 protein only when phosphorylated at S333.

### ADDITIONAL INFORMATION

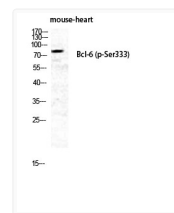
Note **STRICTLY FOR FURTHER SCIENTIFIC RESEARCH USE ONLY (RUO). MUST NOT TO BE USED IN DIAGNOSTIC OR THERAPEUTIC APPLICATIONS.**



Western blot analysis of mouse-heart lysis using Phospho-Bcl-6 (S333) antibody. Antibody was diluted at 1:1000 cells nucleus extracted by Minute TM Cytoplasmic and Nuclear Fractionation kit (SC-003, Inventibiotech, MN, USA).



Western blot analysis of lysates from COLO205 cells treated with insulin 0.01U/ml 15', using Bcl-6 (Phospho-Ser333) Antibody. The lane on the right is blocked with the phospho peptide.



Western blot analysis of MOUSE-HEART cells using Phospho-Bcl-6 (S333) Polyclonal Antibody diluted at 1: 1000 cells nucleus extracted by Minute TM Cytoplasmic and Nuclear Fractionation kit (SC-003, Inventibiotech, MN, USA).