

Anti-Phospho-GRK2-Ser685 antibody (640-689 aa) (STJ90616)

GENERAL INFORMATION

Product Type	Primary antibodies
Applications	WB/ELISA
Host / Source	Rabbit
Reactivity	Human/Mouse/Rat

PRODUCT PROPERTIES

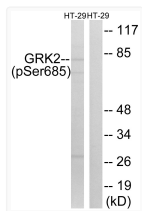
Clonality	Polyclonal
Concentration	1 mg/mL
Conjugation	Unconjugated
Purification	The antibody was affinity-purified from rabbit antiserum by affinity-chromatography using epitope-specific immunogen.
Dilution Range	WB 1:500-1:2000 ELISA 1:5000
Formulation	Liquid in PBS containing 50% Glycerol, 0.5% BSA and 0.02% Sodium Azide.
Isotype	IgG
Molecular Weight	Observed: 80kD
Storage Instruction	Store at -20°C for up to 1 year from the date of receipt, and avoid repeat freeze-thaw cycles.

TARGET INFORMATION

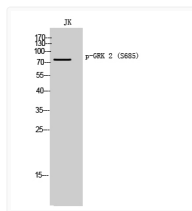
Gene ID	156
Gene Symbol	GRK2
UniProt ID	ARBK1_HUMAN
Immunogen Region	640-689 aa
Specificity	Phospho-GRK 2 (S685) Polyclonal Antibody detects endogenous levels of GRK 2 protein only when phosphorylated at S685.

ADDITIONAL INFORMATION

Note STRICTLY FOR FURTHER SCIENTIFIC RESEARCH USE ONLY (RUO). MUST NOT TO BE USED IN DIAGNOSTIC OR THERAPEUTIC APPLICATIONS.



Western blot analysis of lysates from HT29 cells treated with insulin 0.01U/ml 15', using GRK2 (Phospho-Ser685) Antibody. The lane on the right is blocked with the phospho peptide.



Western blot analysis of JK cells using Phospho-GRK 2 (S685) Polyclonal Antibody diluted at 1:500