

Anti-Phospho-CAV2-Tyr27 antibody (12-61 aa) (STJ90614)

GENERAL INFORMATION

Product Type	Primary antibodies
Applications	WB/ELISA
Host / Source	Rabbit
Reactivity	Human/Rat/Mouse

PRODUCT PROPERTIES

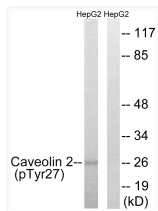
Clonality	Polyclonal
Concentration	1 mg/mL
Conjugation	Unconjugated
Purification	The antibody was affinity-purified from rabbit antiserum by affinity-chromatography using epitope-specific immunogen.
Dilution Range	WB 1:500-1:2000 ELISA 1:10000
Formulation	Liquid in PBS containing 50% Glycerol, 0.5% BSA and 0.02% Sodium Azide.
Isotype	IgG
Molecular Weight	Observed: 26kD
Storage Instruction	Store at -20°C for up to 1 year from the date of receipt, and avoid repeat freeze-thaw cycles.

TARGET INFORMATION

Gene ID	858
Gene Symbol	CAV2
UniProt ID	CAV2_HUMAN
Immunogen Region	12-61 aa
Specificity	Phospho-Caveolin-2 (Y27) Polyclonal Antibody detects endogenous levels of Caveolin-2 protein only when phosphorylated at Y27.

ADDITIONAL INFORMATION

Note STRICTLY FOR FURTHER SCIENTIFIC RESEARCH USE ONLY (RUO). MUST NOT TO BE USED IN DIAGNOSTIC OR THERAPEUTIC APPLICATIONS.



Western blot analysis of lysates from HepG2 cells treated with EGF 200ng/ml 5', using Caveolin 2 (Phospho-Tyr27) Antibody. The lane on the right is blocked with the phospho peptide.